

A close-up portrait of a male swimmer, Ilya Shymanovich, wearing a white swim cap and blue-tinted goggles with a red strap. The swim cap features the 'MAD WAVE' logo in black on the front and 'SHYMANOVICH' in black on the side. The swimmer has a focused expression and is looking directly at the camera.

**MAD
WAVE**

SHYMANOVICH

TEXTILE COLLECTION 2020-21

**MAD
WAVE**

ILYA SHYMANOVICH

Two-time silver medalist at the World Championships. Multiple time medalist at the European Championships. Gold and three-time bronze medalist at the FINA World Swimming Cup 2018. Two-time champion at the 2017 Summer Universiade. Multiple time champion and record holder in the Republic of Belarus. World Class Master of Sports in the Republic of Belarus.

CONTENT

TEXTILE COLLECTION 2020-21

TRIATHLON SUITS

- 2 GREEN TECHNOLOGIES OF PRODUCTION
- 4 FITTING AND CARE OF WETSUITS
- 5 SIZE GUIDE FOR TRIATHLON WETSUITS
- 6 **JET** TRIATHLON WETSUITS
- 7 **PAPID** TRIATHLON WETSUITS
- 8 SIZE GUIDE FOR COMPETITION TRI-SUIT
- 9 COMPETITION TRI-SUIT

RACING SUITS

- 10 FABRIC CLASSIFICATION
- 11 PACKAGING AND CONVENTIONAL SIGNS
- 12 SIZE GUIDE FOR RACING SUITS
- 14 RACING SUITS

SWIMWEAR

- 22 SIZE GUIDE FOR WOMEN SWIMSUITS
- 23 WOMEN TRAINING SWIMSUITS
- 34 WOMEN PERFORMANCE SWIMSUITS
- 40 WOMEN BODY SHAPING SWIMSUITS
- 42 JUNIOR TRAINING SWIMSUITS
- 50 JUNIOR PERFORMANCE SWIMSUITS
- 55 GIRLS SWIMSUITS
- 57 SIZE GUIDE FOR SWIMTRUNKS
- 58 MEN TRAINING SWIMTRUNKS
- 64 MEN PERFORMANCE SWIMTRUNKS
- 66 JUNIOR TRAINING SWIMTRUNKS
- 71 JUNIOR PERFORMANCE SWIMTRUNKS
- 73 BOYS SWIMTRUNKS

APPAREL AND SWIMSHORTS

- 74 SIZE GUIDE FOR APPAREL
- 75 PARKA
- 75 ADULT SPORT SUITS
- 77 JUNIOR SPORT SUITS
- 79 T-SHIRTS
- 82 MEN SWIMSHORTS
- 83 JUNIOR SWIMSHORTS
- 84 KIDS SWIMSHORTS

ABOUT MAD WAVE

MAD WAVE LTD – IS RUSSIAN INTERNATIONAL MANUFACTURER AND DISTRIBUTOR OF SWIMWEAR AND SWIM-RELATED HARDWARE AND ACCESSORIES SINCE 2003. THE COMPANY'S MAIN GOAL WAS TO CREATE THE FIRST RUSSIAN WORLD-CLASS SWIMMING BRAND, CAPABLE OF COMPETING WITH KEY INTERNATIONAL MANUFACTURERS. LOCATED IN SAINT-PETERSBURG, RUSSIA, THE MAD WAVE TEAM CONSISTS OF HIGHLY SKILLED ENGINEERS, GRAPHICAL AND 3D DESIGNERS, DEVELOPERS, AND NOTABLE OLYMPIC SWIMMERS. THE BRAND OFFERS THE VARIETY OF WATER SPORT PRODUCTION RANGES FROM SWIM TRUNKS, GOGGLES AND RACING SUITES TO ALL KIND OF PROFESSIONAL HARDWARE AND ACCESSORIES. THE MAD WAVE LTD IS A SPONSOR AND EQUIPMENT DEVELOPER OF RUSSIAN AND CIS NATIONAL SWIMMING LEAGUES AND UNIONS.

THE PASSION FOR SPORT, STRONG ENGINEERING AND INNOVATIVE MATERIALS ARE HERE TO MEET THE PROFESSIONAL DEMANDS OF SWIMMERS ALL OVER THE WORLD.

MAD WAVE TAKES ACTIVE PART IN THE POPULARIZATION OF SWIMMING AND OTHER WATER SPORTS. IT SUPPORTS NATIONAL, CHILDREN & YOUTH SPORTS AND SPONSORS ALL RUSSIAN AND CIS KEY SWIMMING COMPETITIONS. MAD WAVE IS OFFICIAL SPONSOR OF THE 2013 SUMMER UNIVERSIADE IN KAZAN, OFFICIAL PARTNER OF "WORLD CHILDREN'S WINNERS GAMES" ORGANIZED BY NON-PROFIT "GIFT OF LIFE".

SINCE 2014 COMPANY ORGANIZES ITS OWN INTERNATIONAL JUNIOR SWIMMING COMPETITION – "MAD WAVE CHALLENGE".

MAD WAVE IS THE FIRST RUSSIAN SWIMMING BRAND PRESENTED IN MORE THAN 20 COUNTRIES ALL OVER THE GLOBE. PROFESSIONAL RACING EQUIPMENT IS CERTIFIED BY FINA AND MEETS ALL INTERNATIONAL STANDARDS.



GREEN TECHNOLOGIES MAD WAVE

GREEN TECHNOLOGIES THAT CREATE MORE ECO-FRIENDLY NEOPRENE

104 L PER 1 KG
OF FABRIC
WATER RESOURCE
CONSERVED

26% PER KG
OF FABRIC
CO₂ FOOTPRINT
REDUCED

45 PLASTIC
BOTTLES
IN FABRIC
FOR ONE WETSUIT

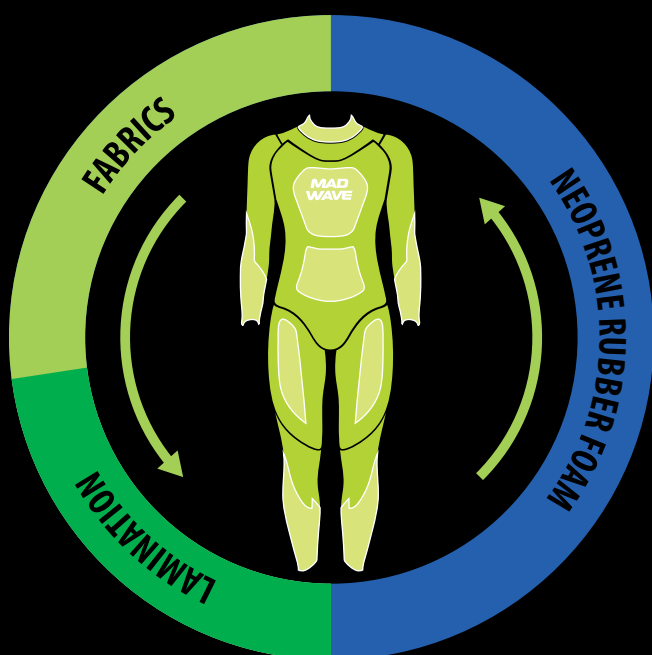
600 G PER SUIT
SOLVENT / VOCs
ELIMINATED

2.698 KG
CO₂ REDUCED
PER WETSUIT

72%
CO₂ EMISSION
DECLINED

5000 KG
NEOPRENE WASTE
REBORN EVERY YEAR

PRODUCTION PROCESS OF NEOPRENE FOR WETSUITS:



WATER BASED GLUE

The R&D team turned solvent-based lamination glue into water-based glue, eliminating harmful volatile organic compounds (VOCs).



LIMESTONE NEOPRENE

We use earth limestone to replace petrochemicals in our neoprene. It comes from nature and has less environmental impact.



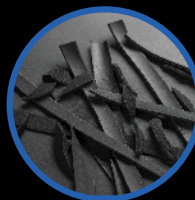
ECO CARBON BLACK

Carbon Black, one of the key ingredients of neoprene, can now be pyrolyzed from scrap rubber tires. This significantly reduces energy consumption and cuts CO₂ emission by 200 g per wetsuit.



PAHS MINIMIZED FORMULATION

Neoprene rubber foam formulation eliminated near all of the polycyclic aromatic hydrocarbon (PAHs) substances.



NEOPRENE RECYCLING PROCESS

We recycle as much neoprene production waste as possible and turn them into qualified products, thus minimizing the waste that goes to landfills.



RECYCLED POLYESTER

A wide selection of our fabrics are knitted with polyester yarn made from recycled plastic bottles. This helps reduce waste and material consumption at the same time.



DOPE-DYED YARN

Dope-dyeing infuses dye pigments into molten plastic solution to produce colored yarns without the dyeing process. This saves tremendous amounts of water while reducing energy consumption and water pollution.



ARTHUR KANTAUSKAS

Master of Sport, World Champion and Champion of the Russian Federation, winner of the Oceanman Open Water series (Tabarca, Spain), participant in the final stage of the Swimming World Cup (UAE, Dubai).

FOLLOW THESE 10 SIMPLE STEPS TO LEARN
HOW TO MOST EFFECTIVELY PUT ON YOUR WETSUIT:

**START****1**

Unzip wetsuit
and fold it in half.

2

To avoid nicks,
put gloves on hands
and booties on feet
(provided with purchase).

3

Carefully push one foot
(covered with bootie)
through wetsuit leg.

4

Gently pull up wetsuit
leg toward the crotch
and hip, smoothing
wrinkles with your
finger pads
(not fingernails).

5

Repeat process
on other leg.
Suit should now
be positioned
high on hips.

**6**

Slide one gloved hand
through wetsuit sleeve.
Cuff should sit above
wrist bone.

7

Carefully gather and
adjust sleeve so it is
comfortably positioned
on shoulders. Stretch
panels should be directly
under armpits.

8

Repeat process
on other arm.

9

Make sure the inner back
flap behind the zip is laying
flat with no ripples, then
hold the base of the zip
and pull the lanyard
all the way up to close flap.

10

Stretch and adjust suit
as necessary to achieve
maximum fit and range
of motion.

FINISH

CLEANING: Rinse in fresh water after every use.
Air dry only, away from direct sunlight.

STORAGE: Store dry suit in a cool room on a plastic hanger.
When traveling, roll suit up, do not fold it.

REMOVING: To remove suit, grip the chest and then the back area.
Do not pull by the collar.

AVOID: Do not use sharp or abrasive objects near wetsuit, including hairpins and fingernails, as this will tear the fabric. Do not use petroleum-based products, such as lubricants, as they may damage the neoprene.

WOMEN'S SIZE CHART

weight (kg) \ height (cm)	144-150	150-158	158-160	160-164	164-168	168-172	172-176	176-180	180+
46-50	XS	XS	XS	XS	S	S	S	M	L
51-53	XS	XS	S	S	S	S	M	M	L
54-57	S	S	S	S	S	M	M	M	L
58-60	S	S	S	S	M	M	M	L	L
61-64	S	S	M	M	M	M	L	L	XL
65-67	M	M	M	M	M	L	L	XL	XL
68-71	M	M	M	M	L	L	XL	XL	XL
72-75	M	M	L	L	L	XL	XL	XL	XL
76-79	M	L	L	L	XL	XL	XL	XL	men's LL
80-83	L	L	L	XL	XL	XL	XL	men's L	men's LL
84+	L	L	XL	XL	XL	XL	XL	men's L	men's LL

MEN'S SIZE CHART

weight (kg) \ height (cm)	157-160	160-164	164-170	170-175	175-180	180-182	182-186	186-189	190-194	195+
51-54	XS	XS	XS	XS	XS	S	S	SL	M	M
55-59	XS	XS	XS	XS	S	S	SL	M	M	ML
60-64	S	S	S	S	S	SL	SL	M	ML	ML
65-68	S	S	S	S	SL	SL	M	ML	ML	L
69-74	SL	SL	SL	SL	SL	M	M	ML	L	L
75-80	SL	M	M	M	M	ML	ML	L	L	LL
81-85	M	M	M	M	ML	ML	ML	L	LL	LL
86-90	M	ML	ML	ML	ML	L	L	LL	LL	XL
91-95	ML	ML	L	L	L	LL	LL	LL	XL	XL
96-100	ML	L	L	LL	LL	LL	XL	XL	XL	XXL
100+	L	LL	LL	LL	XL	XL	XXL	XXL	XXL	XXL

M2028 01 04W

JET

WOMEN WETSUIT.

Fina approved triathlon wetsuit is a professional solution for trainings and triathlon competitions and swimming in open water. MAD WAVE X-PANELS innovative cellular paneling allows you to maintain the ideal body positioning in the water and increase your speed. Tested by Mad Wave specialists, the form, size and placement of the X-PANELS cells allow athletes to move through the water quickly and effectively. GLIDESKIN hydrophobic protection technology allows the outer layer of fabric to be completely hydrophobic. Using more elastic, thinner neoprene with more advanced wear-resistance in the shoulder areas provides you with maximum comfort even during long distances. Elastic construction wrist insertions made of ultra-strong material, these insertions allow you to quickly remove the suit without losing a second during T1 periods. The collar equipped with reliable protection against unfastening during swims, as well as protection against leaks into the suit. Antimicrobial lining provides superior protection against odors and keeps you fresher longer.

Shell fabric: neoprene 100%

Lining: Nylon 85%, Polyester 15%

Art.	3	4	5	6	7
MW	XS	S	M	L	XL



MA271156



M2018 01 05W

JET

MEN WETSUIT.

Fina approved triathlon wetsuit is a professional solution for trainings and triathlon competitions and swimming in open water. MAD WAVE X-PANELS innovative cellular paneling allows you to maintain the ideal body positioning in the water and increase your speed. Tested by Mad Wave specialists, the form, size and placement of the X-PANELS cells allow athletes to move through the water quickly and effectively. GLIDESKIN hydrophobic protection technology allows the outer layer of fabric to be completely hydrophobic. Using more elastic, thinner neoprene with more advanced wear-resistance in the shoulder areas provides you with maximum comfort even during long distances. Elastic construction wrist insertions made of ultra-strong material, these insertions allow you to quickly remove the suit without losing a second during T1 periods. The collar equipped with reliable protection against unfastening during swims, as well as protection against leaks into the suit. Antimicrobial lining provides superior protection against odors and keeps you fresher longer.

Shell fabric: neoprene 100%

Lining: Nylon 85%, Polyester 15%

Art.	1	2	3	4	5	6	7	8	9
MW	XS	S	SL	M	ML	L	LL	XL	2XL



MA171157



M2028 02 ☐ 11W

RAPID

WOMEN WETSUIT.

Fina approved triathlon wetsuit is a professional solution for trainings and triathlon competitions and swimming in open water.

GLIDESKIN hydrophobic protection technology allows the outer layer of fabric to be completely hydrophobic. Using more elastic, thinner neoprene with more advanced wear-resistance in the shoulder areas provides you with maximum comfort even during long distances. Elastic construction wrist insertions made of ultra-strong material, these insertions allow you to quickly remove the suit without losing a second during T1 periods.

The collar equipped with reliable protection against unfastening during swims, as well as protection against leaks into the suit. Antimicrobial lining provides superior protection against odors and keeps you fresher longer.

Shell fabric: neoprene 100%

Lining: Nylon 85%, Polyester 15%

Art.	3	4	5	6	7
MW	XS	S	M	L	XL



M2018 02 ☐ 06W

RAPID

MEN WETSUIT.

Fina approved triathlon wetsuit is a professional solution for trainings and triathlon competitions and swimming in open water.

GLIDESKIN hydrophobic protection technology allows the outer layer of fabric to be completely hydrophobic. Using more elastic, thinner neoprene with more advanced wear-resistance in the shoulder areas provides you with maximum comfort even during long distances. Elastic construction wrist insertions made of ultra-strong material, these insertions allow you to quickly remove the suit without losing a second during T1 periods.

The collar equipped with reliable protection against unfastening during swims, as well as protection against leaks into the suit. Antimicrobial lining provides superior protection against odors and keeps you fresher longer.

Shell fabric: neoprene 100%

Lining: Nylon 85%, Polyester 15%

Art.	1	2	3	4	5	6	7	8	9
MW	XS	S	SL	M	ML	L	LL	XL	2XL



WOMEN'S SIZE CHART

MW size mark	XS	S	M	L	XL	XXL
Chest (cm)	80-84	84-88	88-92	92-96	96-100	100-104
Waist (cm)	60-64	64-68	68-72	72-76	76-80	80-84
Hips (cm)	84-88	88-92	92-96	96-100	100-104	104-108
Body lenght (cm)	141-147	147-153	153-159	159-165	165-171	170-176
International size conversion:						
RUS	42	44	46	48	50	52
USA / UK / F / I / D / AUS	XS	S	M	L	XL	XXL

MEN'S SIZE CHART

MW size mark	XS	S	M	L	XL	XXL
Chest (cm)	88-92	92-96	96-100	100-104	104-108	108-112
Waist (cm)	70-74	74-78	78-82	82-86	86-90	88-92
Hips (cm)	87-91	91-95	95-99	99-103	103-107	107-111
Body lenght (cm)	150-160	160-165	165-170	170-180	180-185	185-190
International size conversion:						
RUS	44	46	48	50	52	54
USA / UK / F / I / D / AUS	XS	S	M	L	XL	XXL

RIVAL

Women Competition Tri-Suit without sleeves. It is made from light, vapour permeable fabric with UPF 50+. The mesh fabric on back provides the best ventilation. Ergonomic pad system is very comfortable for cycling and doesn't disturb while running. Optimum thickness in zones, air ventilation system and material provides fast dry for the pad. Front zipper lets fit the suit fast. Two side pockets with flaps on the back are for the meal. The placement of the pocket lets easy use and keeps safe the contents while running. The rubber with silicon layer at the bottom of leg protects it from slipping. Nylon 78%, Spandex 22%

RIVAL

Men Competition Tri-Suit without sleeves. It is made from light, vapour permeability fabric with UPF 50+. The mesh fabric on back provides the best ventilation. Ergonomic pad system is very comfortable for cycling and don't disturb while running. Optimum thickness in zones, air ventilation system and material provides fast dry for the pad. Front zipper lets fit the suit fast. Two side pockets with flaps on the back are for the meal. The placement of the pocket let easy use and keep safe the contents while running. The rubber with silicon layer at the bottom of leg protect it from slipping. Nylon 78%, Spandex 22%

MAD WAVE presents the new range of swimwear which conform the highest requirements of professional athletes and fitness swimmers. Our collection can be divided in 5 lines: racing, training, performance, junior and kids.

RACING line is designed specially for profesional needs.

All features of this line are aimed one goal - top speed and performance. All racing suits Forceshell, Revolution and Bodysell line were certified by the International Swimming Federation (FINA) and published on FINA web site.

TRAINING is designed for regular and hard workouts. The product retains its properties longer in an aggressive pool 's environment due its composition.

PERFORMANCE (Fitness) series includes a wide assortment swimsuits and trunks of various colors and cut. Products of this series are designed for competitions and recreation.

JUNIOR is assortment of bright and comfortable clothing for junior swimmers.

KIDS line is oriented for little swimming lovers.

The models are produced from more softer fabrics for sensitive skin.



TRAINING

100% Polyester

(47% PBT, 53% Polyester)

-CL2 resist.

-Anti-UV (sunlight resistant).

-Twenty times more durable than regulary swimming fabric.

-High operational qualities.

-Quickly dries.



X-TREME

Shell fabric: Elastane 38%, Polyamide 62%. Lining: Elastane 32%, Polyamide 68%

-Plasma nano-treatment increases the water-repellent properties of the fabric.

-The combination of two unique fabrics provides a tight and comfortable fit without limiting your range of movement.

-Zoned compression provides additional muscle support in overstressed areas, allowing you to move in the water at maximum speed.

-Innovative ergonomic lining provides maximum comfort and convenience.

-Increased strength four times stronger than the fabric of the base models.



BASE XTRALIFE

Recycled polyamide, Elastane (Xtra Life Lycra)

-78% of fabric are made of Econyl, which is 100% recycled polyamide (ecologically safe material).

-Due to Xtra Life Lycra fibres fabric is much more higher resistance to damaging effects caused by external agents such as heat, chlorine and sunscreens.

-Flexibility. Comfort fit.



FORCESHELL

56% Polyamide, 44% Elastane

-Reinforced Poly Shell for Advanced Compression.

-MW LOTUS Fabric-The high-tech fabric, micro perforation makes it super hydrophobic.

-Welded structure for perfect fit and better gliding.

-Teflon coating (hydro repellent).

-Turbulence Reduction.

-Plasma NANO treatment.



BASE

Polyamide or Nylon / Elastane

-High operational qualities.

-Flexibility.

-Comfort fit.

-Quickly dries.



BODYSHELL

66% Polyamide, 34% Elastane

-Teflon coating (hydro repellent).

-Maximum speed for professional competition.

-Softness and comfortable fit for easy movement.

-Plasma NANO treatment.

-Extra light.



BASE KIDS

Polyamide or Nylon / Elastane

-More softer fabrics for sensitive skin.

-Flexibility. Comfort fit.

-High operational qualities.

-Quickly dries.



REVOLUTION

71% Polyamide (Micro), 29% Elastane (Xtra Life Lycra)

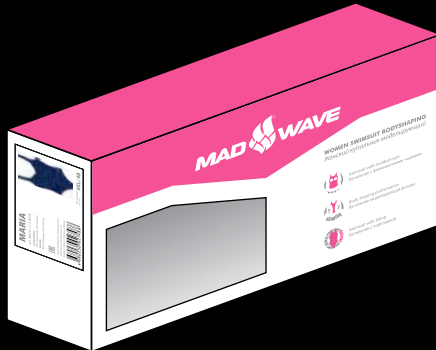
-Due to Xtra Life Lycra fibres fabric is much more higher resistance to damaging effects caused by external agents such as heat, chlorine and sunscreens.

-Softness and comfortable fit for easy movement.

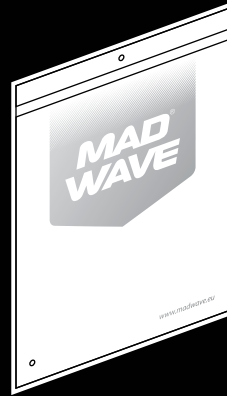
-High operational qualities. Quickly dries.

-Anti-UV (sunlight resistant).

Carton box
for swimsuit with cups.
65x288x156mm



PPE bag for performance
and training swimwear.
205x220mm / 290x220mm



Carton box
for racing swimwear.
132x177x51mm



Carton box
for tri-suits.
190x240x41mm



BONES

There are cups with bones for better bust support.



RUSSIAN IDENTITY

Russian National Identity sign.
This style available for redesign in your country style.



CUPS

Foam moulded cups for security fit.



AJUSTABLE STRAPS

Ajustable straps provide an ideal fit.



TOP SUPPORT

The upper part of swimsuit has lining with rubber under bust for better support.



REVERSE

This style can be turned out
and worn on both sides.



FRONT LINING

There is full front lining in the swimsuit.



REVERSE

This style can be turned out
and worn on both sides.



SHAPING

Swimsuit with correction effect on the body.
Special tighten-mesh fabric provide necessary
support in belly and sides areas for beautiful
body shape.



BIG SIZE

Big size swimtrunks.



PREGNANT

Swimsuit with special construction
for pregnant ladies.



Pending approval
by International Swimming Federation.

SIZE GUIDE FOR RACING SUITS
SWIMWEAR

WOMEN'S SIZE CHART

MW size mark	3XS	XXS	XS	S	M	L
Height, cm/ Рост, см	152-158	158-164	164-170	170-176	176-182	182-188
Body length (cm)	127-132	134-139	142-147	151-156	158-163	165-170
Chest (cm)	74-78	78-82	82-86	86-90	90-94	94-98
Waist (cm)	58-62	60-64	62-66	66-70	70-74	74-78
Hips (cm)	79-83	83-87	87-91	91-95	95-99	99-104
International size conversion:						
Rus	38	40	42	44	46	48
USA/GB	28 JR	22	24	26	28	30
F	12-13	28	30	32	34	36
I	12-13	32	34	36	38	40
D	152	26	28	30	32	34
AUS	11-12	0	2	4	6	8

MEN'S SIZE CHART

MW size mark	3XS	XXS	XS	S	M	L	XL
Waist (cm)	63-67	68-72	73-77	78-82	83-89	90-96	97-103
Hips (cm)	70-75	76-81	82-87	88-93	94-99	100-105	106-111
International size conversion:							
RUS	40	42	44	46	48	50	52
USA / GB	26 JR	28 JR	24	26	28	30	32
F	0-11	12-13	60	65	70	75	80
I	10-11	12-13	38	40	42	44	46
D	140 JR	152 JR	0	1	2	3	4
AUS	10-11	12-13	6	8	10	12	14



- Reinforced Poly Shell for Advanced Compression.
- Welded structure for perfect fit and better gliding.
- *MW LOTUS Fabric - The high-tech fabric, Micro Perforation makes it super hydrophobic.
- Teflon coating (hydro repellent).
- Plasma NANO treatment.
- Turbulence Reduction.

56% Polyamide, 44% Elastane



ROSALIA NASRETDINOVA

Many time champion and record breaker in Russia, champion and silver medalist in the World Championship, champion and record breaker in Europe, two-time champion of the 2015 Universiade, a participant in the 2016 Rio Olympic games, and a two-time champion in the 2014 Youth Olympic games.

X-BLADE

WOMEN OPEN BACK SWIMSUIT.

The main technological feature of X-BLADE model is the innovative technology of combining fabrics with variable resistance that provides optimal dynamic compression of the muscles in the areas of increased load. The unique fabric with plasma nano-treatment shows the increased waterproof properties and provides the least resistance in water. The specially designed constructive bands increase the stability of compression characteristics of the suit. The advanced technology of ultrasound welding at the strengthened seams creates a surface which provides the best glide thanks to the decreased friction resistance and turbulence at the junctions.

Shell fabric: Polyamide 62%, Elastane 38%

Lining: Polyamide 68%, Elastane 32%

Art.	1	2	3	4	5	6
MW	3XS	XXS	XS	S	M	L



M0269 08 ☐ 4BW

Open back

X-BLADE

MEN JAMMER.

The main technological feature of X-BLADE model is the innovative technology of combining fabrics with variable resistance that provides optimal dynamic compression of the muscles in the areas of increased load. The unique fabric with plasma nano-treatment shows the increased waterproof properties and provides the least resistance in water. The specially designed constructive bands increase the stability of compression characteristics of the suit. The advanced technology of ultrasound welding at the strengthened seams creates a surface which provides the best glide thanks to the decreased friction resistance and turbulence at the junctions.

Shell fabric: Polyamide 62%, Elastane 38%

Lining: Polyamide 68%, Elastane 32%

Art.	2	3	4	5	6	7
MW	XXS	XS	S	M	L	XL



M0259 07 ☐ 4BW

Low west

X-BLADE

WOMEN FULL BACK SWIMSUIT.

The main technological feature of X-BLADE model is the innovative technology of combining fabrics with variable resistance that provides optimal dynamic compression of the muscles in the areas of increased load. The unique fabric with plasma nano-treatment shows the increased waterproof properties and provides the least resistance in water. The specially designed constructive bands increase the stability of compression characteristics of the suit. The advanced technology of ultrasound welding at the strengthened seams creates a surface which provides the best glide thanks to the decreased friction resistance and turbulence at the junctions.

Shell fabric: Polyamide 62%, Elastane 38%

Lining: Polyamide 68%, Elastane 32%

Art.	1	2	3	4	5	6
MW	3XS	XXS	XS	S	M	L



M0269 07 ☐ 4BW

Full back

X-BLADE

MEN JAMMER HIGH WAIST.

The main technological feature of X-BLADE model is the innovative technology of combining fabrics with variable resistance that provides optimal dynamic compression of the muscles in the areas of increased load. The unique fabric with plasma nano-treatment shows the increased waterproof properties and provides the least resistance in water. The specially designed constructive bands increase the stability of compression characteristics of the suit. The advanced technology of ultrasound welding at the strengthened seams creates a surface which provides the best glide thanks to the decreased friction resistance and turbulence at the junctions.

Shell fabric: Polyamide 62%, Elastane 38%

Lining: Polyamide 68%, Elastane 32%

Art.	2	3	4	5	6	7
MW	XXS	XS	S	M	L	XL



M0259 06 ☐ 4BW

High west

FORCESHELL X

WOMEN OPEN BACK SWIMSUIT.

FINA approved FORCESHELL Racing Suit is designed using innovative fabric, which has the strongest possible compression and hydrophobic characteristics, provided by reinforced polyester mesh and MW Lotus Fabric technology. Double-sided gluing technology on the seams increases the durability of the suit by more than 2x. Glued seams provides the best glide in the water. High compression level is ideal for overcoming sprinter distances. Silicone seals above the knee provide ideal fit for the suit.

Polyamide 56%, Elastane 44%

Art.	1	2	3	4	5	6
MW	3XS	XXS	XS	S	M	L



MA220082


M0260 01 ☐ F4W

Open back

FORCESHELL X

WOMEN FULL BACK SWIMSUIT.

FINA approved FORCESHELL Racing Suit is designed using innovative fabric, which has the strongest possible compression and hydrophobic characteristics, provided by reinforced polyester mesh and MW Lotus Fabric technology. Double-sided gluing technology on the seams increases the durability of the suit by more than 2x. Glued seams provides the best glide in the water. High compression level is ideal for overcoming sprinter distances. Silicone seals above the knee provide ideal fit for the suit.

Polyamide 56%, Elastane 44%

Art.	1	2	3	4	5	6
MW	3XS	XXS	XS	S	M	L



MA220084


M0260 02 ☐ F4W

Full back

FORCESHELL X

MEN JAMMER.

FINA approved FORCESHELL Racing Suit is designed using innovative fabric, which has the strongest possible compression and hydrophobic characteristics, provided by reinforced polyester mesh and MW Lotus Fabric technology. Double-sided gluing technology on the seams increases the durability of the suit by more than 2x. Glued seams provides the best glide in the water. High compression level is ideal for overcoming sprinter distances. Silicone seals above the knee provide ideal fit for the suit.

Polyamide 56%, Elastane 44%

Art.	2	3	4	5	6	7
MW	XXS	XS	S	M	L	XL



MA140082


M0250 01 ☐ F4W

Low west

FORCESHELL

WOMEN OPEN BACK SWIMSUIT.

FINA approved FORCESHELL Racing Suit is designed using innovative fabric, which has the strongest possible compression and hydrophobic characteristics, provided by reinforced polyester mesh and MW Lotus Fabric technology. Double-sided gluing technology on the seams increases the durability of the suit by more than 2x. Glued seams provides the best glide in the water. High compression level is ideal for overcoming sprinter distances. Silicone seals above the knee provide ideal fit for the suit.

Polyamide 56%, Elastane 44%

Art.	1	2	3	4	5	6
MW	3XS	XXS	XS	S	M	L



M0269 06 06W



M0269 06 05W



Open back

FORCESHELL

WOMEN FULL BACK SWIMSUIT.

FINA approved FORCESHELL Racing Suit is designed using innovative fabric, which has the strongest possible compression and hydrophobic characteristics, provided by reinforced polyester mesh and MW Lotus Fabric technology. Double-sided gluing technology on the seams increases the durability of the suit by more than 2x. Glued seams provides the best glide in the water. High compression level is ideal for overcoming sprinter distances. Silicone seals above the knee provide ideal fit for the suit.

Polyamide 56%, Elastane 44%

Art.	1	2	3	4	5	6
MW	3XS	XXS	XS	S	M	L



M0269 07 06W



M0269 07 05W



Full back

FORCESHELL

MEN JAMMER.

FINA approved FORCESHELL Racing Suit is designed using innovative fabric, which has the strongest possible compression and hydrophobic characteristics, provided by reinforced polyester mesh and MW Lotus Fabric technology. Double-sided gluing technology on the seams increases the durability of the suit by more than 2x. Glued seams provides the best glide in the water. High compression level is ideal for overcoming sprinter distances. Silicone seals above the knee provide ideal fit for the suit.

Polyamide 56%, Elastane 44%

Art.	2	3	4	5	6	7
MW	XXS	XS	S	M	L	XL



M0259 04 06W



M0259 04 05W



Low west

MW EXT BODYSHELL

WOMEN OPEN BACK SWIMSUIT.

Made with a passion for sport BODYSHELL racing suits will provide you with balanced compression characteristics, a perfect fit, and reinforced seam technology. The suit's fabric was treated with multilayered PTFE coating to maximize its hydrophobic properties and deliver the perfect glide in the water. Medium compression level – ideal for overcoming stayer distances. Lightweight and durable material – combines both lightness and the highest durability. Reinforced seam technology – provides maximum convenience and comfort. Polyamide 66%, Elastane 34%



Art.	1	2	3	4	5	6
MW	3XS	XXS	XS	S	M	L


M0260 03 ☐ B1W

Open back

MW EXT BODYSHELL

MEN JAMMER.

Made with a passion for sport BODYSHELL racing suits will provide you with balanced compression characteristics, a perfect fit, and reinforced seam technology. The suit's fabric was treated with multilayered PTFE coating to maximize its hydrophobic properties and deliver the perfect glide in the water. Medium compression level – ideal for overcoming stayer distances. Lightweight and durable material – combines both lightness and the highest durability. Reinforced seam technology – provides maximum convenience and comfort. Polyamide 66%, Elastane 34%



Art.	2	3	4	5	6	7
MW	XXS	XS	S	M	L	XL


M0250 02 ☐ B1W

Low west

MW EXT BODYSHELL

WOMEN OPEN BACK SWIMSUIT.

Made with a passion for sport BODYSHELL racing suits will provide you with balanced compression characteristics, a perfect fit, and reinforced seam technology. The suit's fabric was treated with multilayered PTFE coating to maximize its hydrophobic properties and deliver the perfect glide in the water. Medium compression level – ideal for overcoming stayer distances. Lightweight and durable material – combines both lightness and the highest durability. Reinforced seam technology – provides maximum convenience and comfort. Polyamide 66%, Elastane 34%

Fina
09/09



MA229363

Art.	1	2	3	4	5	6
MW	3XS	XXS	XS	S	M	L



M0269 04 05W

M0269 04 08W

M0269 04 01W

Open back

MW EXT BODYSHELL

MEN JAMMER.

Made with a passion for sport BODYSHELL racing suits will provide you with balanced compression characteristics, a perfect fit, and reinforced seam technology. The suit's fabric was treated with multilayered PTFE coating to maximize its hydrophobic properties and deliver the perfect glide in the water. Medium compression level – ideal for overcoming stayer distances. Lightweight and durable material – combines both lightness and the highest durability. Reinforced seam technology – provides maximum convenience and comfort. Polyamide 66%, Elastane 34%

Fina
09/09



MA149363

Art.	2	3	4	5	6	7
MW	XXS	XS	S	M	L	XL



M0269 04 05W

M0269 04 08W

M0269 04 01W

Open back



MW REVOLUTION

WOMEN OPEN BACK SWIMSUIT

FWomen Kneeskin Suit from competition fabric. Very elastic material provides comfortable in use. Compression in necessary parts. Water resistant fabric provides you better sliding. Can be used for training and competitions.

Polyamide (Micro) 71%

Elastane (Xtra Life Lycra) 29%

Art.	1	2	3	4	5	6
MW	3XS	XXS	XS	S	M	L

Fina
AQ



MA220833



M0167 03 06W



M0167 03 05W



M0167 03 16W



Open back



M0167 03 11W



Open back

MW REVOLUTION

MEN JAMMER.

FMen Jammer from competition fabric. Very elastic material provides comfortable in use. Compression in necessary parts. Water resistant fabric provides you better sliding. Can be used for training and competitions.

Polyamide (Micro) 71%

Elastane (Xtra Life Lycra) 29%

Art.	2	3	4	5	6	7
MW	XXS	XS	S	M	L	XL

Fina
AQ



MA140875



M0257 01 06W



M0257 01 05W



M0257 01 16W



Low west

WOMEN'S SIZE CHART

MW size mark	XXS	XS	S	M	L	XL	XXL	3XL	4XL	5XL
Chest (cm)	78-82	82-86	86-90	90-94	94-98	98-102	102-106	106-110	110-114	114-118
Waist (cm)	58-62	62-66	66-70	70-74	74-79	80-84	85-89	90-94	95-99	100-104
Hips (cm)	84-88	88-92	92-96	96-100	100-104	105-109	110-114	115-119	120-124	125-129
International size conversion:										
RUS	40	42	44	46	48	50	52	54	56	58
USA	6	8	10	12	14	16	18	20	22	24
GB	28	30	32	34	36	38	40	42	44	46
F	34	36	38	40	42	44	46	48	50	52
I	38	40	42	44	46	48	50	52	54	56
D	32	34	36	38	40	42	44	46	48	50
AUS	6	8	10	12	14	16	18	20	22	24

JUNIOR AND KIDS SIZE CHART

MW size mark	3XS	XXS	XS	S	M	L	XL	XXL
Height (cm)	86-92	98-104	110-116	122-128	134-140	146-152	152-158	158-164
Chest (cm)	48-52	52-56	56-60	60-64	64-68	68-72	72-78	78-82
Waist (cm)	46-50	49-52	52-55	55-58	56-60	58-62	59-63	60-64
Hips (cm)	53-57	58-62	63-67	66-70	70-74	74-80	80-84	84-88
Age	1-2	3-4	5-6	7-8	9-10	11-12	13-14	14-15
International size conversion:								
RUS	26	28	30	32	34	36	38	40
USA	2T	3T	22	24	26	28	30	32
GB	19	20	22	24	26	28	30	32
F / I / AUS	1-2	2-3	4-5	6-7	8-9	10-11	12-13	14-15
D	92	98	110	116	128	140	152	164

LADA

WOMEN SWIMSUIT ANTICHLOR.

LADA swimsuit is ideal for regular training. Open back and a high-cut thigh provides maximum freedom of movement and comfort in use. Made of extra-durable chlorine-resistant fabric.

Dark colors LADA unlined.

Polyester 100%

Art.	3	4	5	6	7	8
MW	XS	S	M	L	XL	2XL



M1462 02 □ 21W



M1462 02 □ 03W



M1462 02 □ 01W



Leg:
High



M1462 02 □ 18W



M1462 02 □ 15W



Leg:
High

SALUT

WOMEN SWIMSUIT ANTICHLOR.

Swimsuit with semi-open back and wide straps. Provides reliability and comfort in use. High-cut thigh provides maximum freedom of movement, makes legs appear longer. Made of extra-durable chlorine-resistant fabric.

For regular training in the pool.

Polyester 100%

Art.	3	4	5	6	7
MW	XS	S	M	L	XL



M1469 14 □ 03W



M1469 14 □ 01W



Leg:
Medium



M1469 14 □ 18W



M1469 14 □ 05W



Leg:
Medium

CROSSBACK

WOMEN SWIMSUIT ANTICHLOR.

An open back and thin, double straps provide additional freedom of arm movement and a light feeling in the water. Medium-cut thigh suitable for any figure, provides comfort and freedom of movement. Front side of swimsuit is duplicated on lining. Made of extra-durable chlorine-resistant fabric. Polyester 100%

Art.	3	4	5	6	7
MW	XS	S	M	L	XL



M1469 15 □ 05W



M1469 15 □ 03W



M1469 15 □ 01W



Leg:
Medium



M1469 15 □ 18W



Leg:
Medium

DARIA

WOMEN SWIMSUIT ANTICHLOR.

An open back and thin straps provide additional freedom of arm movement and a light feeling in the water. High-cut thigh provides maximum freedom of movement. Made of extra-durable chlorine-resistant fabric. For regular training in the pool. Maximum protection from chlorine. Polyester 100%. Lining – Polyester 92%, Elastane 8%.

Art.	3	4	5	6	7
MW	XS	S	M	L	XL



M1469 16 □ 05W



M1469 16 □ 09W



M1469 16 □ 01W



Leg:
High

WATERPOLO

WOMEN SWIMSUIT ANTICHLOR.

WATERPOLO swimsuit with completely closed back is ideal for water polo trainings and competitions. Made of extra-durable chlorine-resistant fabric, the model features additional zipper blockers and strengthened seams, allowing you to stay focused on the game. Polyester 100%. Lining – Nylon 92%, Spandex 8%.

Art.	3	4	5	6	7
MW	XS	S	M	L	XL



M0169 01 01W

M0169 01 04W

Leg:
High

CROSSFIT TOP

WOMEN TOP ANTICHLOR.

Top with thin straps. Double straps provide additional freedom of arm movement and a light feeling in the water. Front side of swimsuit is duplicated on lining. Made of extra-durable chlorine-resistant fabric. For regular training in the pool. Polyester 100%

Art.	3	4	5	6	7
MW	XS	S	M	L	XL



M1468 06 01W

CROSSFIT BOTTOM

WOMEN TRUNKS ANTICHLOR.

Low-rise of swimtrunks provides comfort and maximum freedom of movement. Front side of swimsuit is duplicated on lining. Made of extra-durable chlorine-resistant fabric. For regular training in the pool. Polyester 100%

Art.	3	4	5	6	7
MW	XS	S	M	L	XL



M1468 07 01W

Leg:
High

DRAG SHORTS

FEMALE DRAG SHORTS.

Create additional resistance in the water, allowing you to develop strength and endurance. Made from durable and wear-resistant fabric, dries quickly, does not shrink when washed, does not need ironing. Free cut doesn't restrict movement, suitable for any type of figure. Polyester 100%

Art.	2	3	4	5	6	7
MW	XXS	XS	S	M	L	XL



M0256 01 16W

CRISS-CROSS

WOMEN SWIMSUIT ANTICHLOR.

One piece training swimsuit offers excellent colour and shape retention properties due to the chlorine resistant fabric. Shape follows the natural curvature of the body and thick branded straps gives soft support when swimming with range of motion isn't compromised. The suit has from lining and medium hip cut. Polyester 100%

Art.	3	4	5	6	7
MW	XS	S	M	L	XL



M1460 13 ☐ E2W



M1460 03 ☐ Y6W



M1460 01 ☐ J1 W



Leg:
High



M1460 20 ☐ E1 W



Leg:
High

AMBITION

WOMEN SWIMSUIT ANTICHLOR.

Open back and an athletic, ergonomic cut provides flexible movement and comfort in use. High-cut thigh provides maximum freedom of movement, makes legs appear longer. Training fabric is maximum durability, ideal form support, resistant to chlorine and salt water, dries fast. For regular training in the pool. Polyester 100%.

Art.	3	4	5	6	7
MW	XS	S	M	L	XL



M1460 49 ☐ W2 W



M1460 02 ☐ J3 W



Leg:
High

DIANA

WOMEN SWIMSUIT ANTICHLOR.

An open back and thin straps provide additional freedom of arm movement and a light feeling in the water. Adjustable straps for the most comfortable fit. High-cut thigh provides maximum freedom of movement. Made of extra-durable chlorine-resistant fabric. For regular training in the pool. Polyester 100%. Lining – Polyester 92%, Elastane 8%.

Art.	3	4	5	6	7
MW	XS	S	M	L	XL



M1460 52 ☐ X1W



M1460 07 ☐ B0W



Leg:
High

FLASH

WOMEN SWIMSUIT ANTICHLOR.

An open back and thin straps provide additional freedom of arm movement and a light feeling in the water. High-cut thigh provides maximum freedom of movement. Made of extra-durable chlorine-resistant fabric. For regular training in the pool. Maximum protection from chlorine. Polyester 100%

Art.	3	4	5	6	7
MW	XS	S	M	L	XL



M1460 12 ☐ F1W

Leg:
High

FLASH

WOMEN SWIMSUIT ANTICHLOR.

An open back and thin straps provide additional freedom of arm movement and a light feeling in the water. High-cut thigh provides maximum freedom of movement. Made of extra-durable chlorine-resistant fabric. For regular training in the pool. Maximum protection from chlorine. Polyester 100%

Art.	3	4	5	6	7
MW	XS	S	M	L	XL



M1460 55 ☐ Z2W

M1460 55 ☐ Z3W

Leg:
High

FLASH

WOMEN SWIMSUIT ANTICHLOR.

An open back and thin straps provide additional freedom of arm movement and a light feeling in the water. High-cut thigh provides maximum freedom of movement. Made of extra-durable chlorine-resistant fabric. For regular training in the pool. Maximum protection from chlorine. Polyester 100%

Art.	3	4	5	6	7
MW	XS	S	M	L	XL



M1460 46 ☐ A7W

M1460 30 ☐ J4W

Leg:
High

NERA

WOMEN SWIMSUIT ANTICHLOR.

An open back and thin straps provide additional freedom of arm movement and a light feeling in the water. Medium-cut thigh suitable for any figure, provides comfort and freedom of movement. Made of extra-durable chlorine-resistant fabric. For regular training in the pool. Polyester 100%

Art.	3	4	5	6	7
MW	XS	S	M	L	XL



M1460 31 ☐ N2W

M1460 39 ☐ B2W

Leg:
Medium

SALUT

WOMEN SWIMSUIT ANTICHLOR.

Swimsuit with semi-open back and wide straps. Provides reliability and comfort in use. High-cut thigh provides maximum freedom of movement, makes legs appear longer. Made of extra-durable chlorine-resistant fabric. For regular training in the pool. Polyester 100%

Art.	3	4	5	6	7
MW	XS	S	M	L	XL



M1460 36 □ B2W



M1460 27 □ A1W



M1460 23 □ A5W



Leg:
Hight



M1460 56 □ A7W



Leg:
Hight

WAVE

WOMEN SWIMSUIT ANTICHLOR.

Semi-open back, wide straps, reliability and comfort in use. Medium-cut thigh suitable for any figure, provides comfort and freedom of movement. Molded foam cups for a smooth fit while swimming and ideal figure. Made of extra-durable chlorine-resistant fabric. For regular training in the pool. Polyester 100%

Art.	3	4	5	6	7
MW	XS	S	M	L	XL



M1460 47 □ A7W



M1460 48 □ D1W



Leg:
Hight

CROSSBACK

WOMEN SWIMSUIT ANTICHLOR.

An open back and thin, double straps provide additional freedom of arm movement and a light feeling in the water. Medium-cut thigh suitable for any figure, provides comfort and freedom of movement. Front side of swimsuit is duplicated on lining. Made of extra-durable chlorine-resistant fabric. Polyester 100%

Art.	3	4	5	6	7
MW	XS	S	M	L	XL



M1460 42 □ E7W



M1460 26 □ A1W



M1460 14 □ E2W



Leg:
Medium

DARIA

WOMEN SWIMSUIT ANTICHLOR.

An open back and thin straps provide additional freedom of arm movement and a light feeling in the water. High-cut thigh provides maximum freedom of movement. Made of extra-durable chlorine-resistant fabric. For regular training in the pool. Maximum protection from chlorine. Polyester 100%. Lining – Polyester 92%, Elastane 8%.

Art.	3	4	5	6	7
MW	XS	S	M	L	XL



M1460 15 □ D1W



Leg:
Hight



VOLLEY TOP

WOMEN TOP ANTICHLOR.

Top with thin straps. Thin straps provide additional freedom of arm movement and a light feeling in the water. Made of extra-durable chlorine-resistant fabric. For regular training in the pool. Polyester 100%

Art.	3	4	5	6	7
MW	XS	S	M	L	XL



M1460 50 □ W2W

M1460 53 □ X1W

M1460 21 □ E1W

VOLLEY BOTTOM

WOMEN SWIMTRUNKS ANTICHLOR.

Trunks with medium-cut thigh. Suitable for any figure, provides comfort and freedom of movement. Made of extra-durable chlorine-resistant fabric. For regular training in the pool. Polyester 100%

Art.	3	4	5	6	7
MW	XS	S	M	L	XL



M1460 51 □ W2W

M1460 54 □ X1W

M1460 22 □ E1W

Leg:
Medium

FRISKY TOP

WOMEN TOP ANTICHLOR.

Top with thin straps. Thin straps emphasize elegance of neck and shoulders, provide additional freedom of arm movement and a light feeling in the water. Front side of swimsuit is duplicated on lining. Made of extra-durable chlorine-resistant fabric. For regular training in the pool. Polyester 100%

Art.	3	4	5	6	7
MW	XS	S	M	L	XL



M1460 08 □ B0W

M1460 32 □ N2W

M1460 02 □ J3W

FRISKY BOTTOM

WOMEN TRUNKS ANTICHLOR.

Low-rise of swimtrunks provides comfort and maximum freedom of movement. Front side of swimsuit is duplicated on lining. Made of extra-durable chlorine-resistant fabric. For regular training in the pool. Polyester 100%



M1460 09 □ B0W

M1460 33 □ N2W

M1460 06 □ J3W

Leg:
High

CROSSFIT TOP

WOMEN TOP ANTICHLOR.

Top with thin straps. Double straps provide additional freedom of arm movement and a light feeling in the water. Front side of swimsuit is duplicated on lining. Made of extra-durable chlorine-resistant fabric. For regular training in the pool.

Polyester 100%

Art.	3	4	5	6	7
MW	XS	S	M	L	XL



M1460 18 ☐ D1W

M1460 28 ☐ A1W

M1460 37 ☐ B2W

CROSSFIT BOTTOM

WOMEN TRUNKS ANTICHLOR.

Low-rise of swimtrunks provides comfort and maximum freedom of movement. Front side of swimsuit is duplicated on lining. Made of extra-durable chlorine-resistant fabric. For regular training in the pool.

Polyester 100%

Art.	3	4	5	6	7
MW	XS	S	M	L	XL



M1460 19 ☐ D1W

M1460 29 ☐ A1W

M1460 38 ☐ B2W

Leg:
Height

RELAX TOP

WOMEN BIKINI ANTICHLOR.

Bikini top with thin straps. Adjustable straps emphasize elegance of neck and shoulders, provide additional freedom of arm movement and ocomfortable fit. Front side of swimsuit is duplicated on lining. Made of extra-durable chlorine-resistant fabric.

Polyester 100%

Art.	3	4	5	6	7
MW	XS	S	M	L	XL



M1460 56 ☐ E1W

M1460 10 ☐ B0W

M1460 24 ☐ A5W

RELAX BOTTOM

WOMEN BIKINI ANTICHLOR.

Bikini bottom with thin straps for easy regulation. Low-rise of swimtrunks provides comfort and maximum freedom of movement. Front side of swimsuit is duplicated on lining. Made of extra-durable chlorine-resistant fabric.

Polyester 100%

Art.	3	4	5	6	7
MW	XS	S	M	L	XL



M1460 57 ☐ E1W

M1460 11 ☐ B0W

M1460 25 ☐ A5W

Leg:
Height

FANCY TOP

WOMEN TOP ANTICHLOR.

Two piece training swimsuit offers excellent colour and shape retention properties due to the chlorine resistant fabric. Targeted for pool swimming as well for the beach sports. Branded straps gives an optional soft and firm support with range of motion isn't compromised. Had front lining and removable support bras. Polyester 100%

Art.	3	4	5	6	7
MW	XS	S	M	L	XL



M1460 40 B2W



M1460 16 D1W



M1460 43 E7W



M1460 34 N2W



FANCY BOTTOM

WOMEN SWIMTRUNKS ANTICHLOR.

Two piece training swimsuit offers excellent colour and shape retention properties due to the chlorine resistant fabric. Targeted for pool swimming as well for the beach sports. Branded straps gives an optional soft and firm support with range of motion isn't compromised. Had front lining and removable support bras. Polyester 100%

Art.	3	4	5	6	7
MW	XS	S	M	L	XL



M1460 41 B2W



M1460 17 D1W



M1460 44 E7W



M1460 35 N2W



Leg:
Hight

Leg:
Hight

WAVE

WOMEN SWIMSUIT.

Semi-open back, wide straps, reliability and comfort in use. Medium-cut thigh suitable for any figure, provides comfort and freedom of movement. Molded foam cups for a smooth fit while swimming and ideal figure. BASE fabric provides ideal fit, long-lasting wear and improved compression characteristics.

Polyamide 80%, Elastane 20%

Art.	3	4	5	6	7	8
MW	XS	S	M	L	XL	XXL



M0159 22 □ 11W



M0159 22 □ 03W



M0159 22 □ 01W



Leg:
High



M0159 22 □ 08W



M0159 22 □ 15W



Leg:
Medium

NERA

WOMEN SWIMSUIT.

An open back and thin straps provide additional freedom of arm movement and a light feeling in the water. BASE Xtra Life fabric has high chlorine resistant and long-lasting wear. Medium-cut thigh suitable for any figure, provides comfort and freedom of movement.

Polyamide 80%, Elastane 20%

Art.	3	4	5	6	7
MW	XS	S	M	L	XL



M0155 06 □ 01W



M0155 06 □ 03W



Leg:
Medium



M0155 06 □ 08W



M0155 06 □ 11W



Leg:
Medium

AFRA

WOMEN SWIMSUIT.

A closed back, an athletic, ergonomic cut provides flexible movement and comfort in use. Medium-cut thigh suitable for any figure, provides comfort and freedom of movement. BASE Xtra Life fabric has high chlorine resistant and long-lasting wear.

Polyamide 80%, Elastane 20%

Art.	3	4	5	6	7
MW	XS	S	M	L	XL



M0156 05 03W



M0156 05 01W



Leg:
Hight

IRIS

WOMEN SWIMSUIT.

Full swimsuit with Open Back. Adjustable straps allow to control the amount of space in the chest area, which provides the most comfortable fit. Upper front side of swimsuit is duplicated on the lining with an elastic strap beneath the chest for extra support.

Polyamide 80%, Elastane 20%

Art.	3	4	5	6	7
MW	XS	S	M	L	XL



M0151 09 05W



M0151 09 01W



Leg:
Medium

GAIA

SWIMSUITS FOR PREGNANT.

Swimsuit developed especially for pregnant women. Maximally open back, doesn't restrict movement. Wide straps provide additional comfort, don't pinch or chafe. BASE XtraLife fabric has high chlorine resistance, long-lasting wear, and improved compression characteristics.

Polyamide 80%, Elastane 20%

Art.	4	5	6	7	8
MW	S	M	L	XL	2XL



M0153 05 03W



M0153 05 01W



Leg:
Medium

FRISKY TOP

WOMEN TOP.

Top with thin straps. Thin straps emphasize elegance of neck and shoulders, provide additional freedom of arm movement and a light feeling in the water. Front side of swimsuit is duplicated on lining. Made of extra-durable chlorine-resistant fabric. BASE fabric has high chlorine resistant and long-lasting wear.

Polyamide 80%, Elastane 20%

Art.	3	4	5	6	7
MW	XS	S	M	L	XL



M0158 10 ☐ 01W

Leg:
Hight

FRISKY BOTTOM

WOMEN TRUNKS.

Low-rise of swimtrunks provides comfort and maximum freedom of movement. Front side of swimsuit is duplicated on lining. BASE fabric has high chlorine resistant and long-lasting wear.

Polyamide 80%, Elastane 20%

Art.	3	4	5	6	7
MW	XS	S	M	L	XL



M0158 11 ☐ 01W

Leg:
Hight

RELAX TOP

WOMEN BIKINI ANTICHLOR.

Bikini top with thin straps. Adjustable straps emphasize elegance of neck and shoulders, provide additional freedom of arm movement and ocomfortable fit. Front side of swimsuit is duplicated on lining. BASE fabric has high chlorine resistant and long-lasting wear.

Polyamide 80%, Elastane 20%

Art.	3	4	5	6	7
MW	XS	S	M	L	XL



M0158 12 ☐ 01W

Leg:
Hight

RELAX BOTTOM

WOMEN BIKINI ANTICHLOR.

Bikini bottom with thin straps for easy regulation. Low-rise of swimtrunks provides comfort and maximum freedom of movement. Front side of swimsuit is duplicated on lining. BASE fabric has high chlorine resistant and long-lasting wear.

Polyamide 80%, Elastane 20%

Art.	3	4	5	6	7
MW	XS	S	M	L	XL



M0158 13 ☐ 01W

Leg:
Hight

SLIDE

WOMEN SWIMSUIT.

Swimsuit with power back shape and mid thigh length. The shorts tight hips, completely hide the buttocks and provide comfort while training. The BASE XtraLife fabric has high chlorine resistance, long-lasting wear, and improved compression characteristics. Ergonomic cut provides flexible movement and comfort in use.

Nylon 78%, Spandex 22%

Lining – Nylon 100%

Art.	3	4	5	6	7	8	9
MW	XS	S	M	L	XL	2XL	3XL



M0167 02 □ 03W

M0167 02 □ 01W

Leg:
Mid thigh length

ATHLETIC

WOMEN SWIMSUIT.

Swimsuit with power back shape and knee length. The shorts tight hips, completely hide the buttocks and provide comfort while training. The BASE XtraLife fabric has high chlorine resistance, long-lasting wear, and improved compression characteristics. Knee Length provides comfortable fit and necessary muscle compression.

Nylon 78%, Spandex 22%

Lining – Nylon 100%

Art.	3	4	5	6	7	8	9
MW	XS	S	M	L	XL	2XL	3XL



M0167 01 □ 11W

M0167 01 □ 16W

Leg:
Knee length

FLEX

WOMEN SWIMSUIT.

Semi-open back, wide straps, reliability and comfort in use. Medium-cut thigh suitable for any figure, provides comfort and freedom of movement. BASE fabric provides ideal fit, long-lasting wear and improved compression characteristics.

Polyester 85%, Spandex 15%

Art.	3	4	5	6	7
MW	XS	S	M	L	XL



M0150 15 □ F6W



M0150 24 □ F3W



M0150 20 □ E3W



Leg:
Medium



M0150 31 □ F7W



M0150 23 □ F5W



Leg:
Medium

RATE

WOMEN SWIMSUIT.

Semi-open back and wide straps provide reliability and comfort in use. Medium-cut thigh suitable for any figure, provides comfort and freedom of movement. BASE fabric provides ideal fit, long-lasting wear and improved compression characteristics.

Polyester 85%, Spandex 15%

Art.	3	4	5	6	7
MW	XS	S	M	L	XL



M0150 28 □ A6W



M0150 19 □ E3W



M0150 25 □ F3W



Leg:
Medium

NERA

WOMEN SWIMSUIT.

An open back and thin straps provide additional freedom of arm movement and a light feeling in the water. BASE Xtra Life fabric has high chlorine resistant and long-lasting wear. Medium-cut thigh suitable for any figure, provides comfort and freedom of movement.

Polyester 85%, Spandex 15%

Art.	3	4	5	6	7
MW	XS	S	M	L	XL



M0150 22 □ N1W



M0150 27 □ N3W



Leg:
Medium

CROSSBACK

WOMEN SWIMSUIT.

An open back and thin, double straps provide additional freedom of arm movement and a light feeling in the water. Medium-cut thigh suitable for any figure, provides comfort and freedom of movement. Front side of swimsuit is duplicated on lining.

Polyester 85%, Spandex 15%

Art.	3	4	5	6	7
MW	XS	S	M	L	XL



M0150 26 F3W



M0150 21 E3W



M0150 16 F6W



Leg:
Medium



M0150 29 A6W



Leg:
Medium

WAVE

WOMEN SWIMSUIT.

Semi-open back, wide straps, reliability and comfort in use. Medium-cut thigh suitable for any figure, provides comfort and freedom of movement. Molded foam cups for a smooth fit while swimming and ideal figure. BASE fabric provides ideal fit, long-lasting wear and improved compression characteristics.

Polyester 85%, Spandex 15%

Art.	3	4	5	6	7
MW	XS	S	M	L	XL



M0150 30 A6W



M0150 18 W1W



Leg:
Medium

DUO

WOMEN SWIMSUIT.

An open back and thin straps provide additional freedom of arm movement and a light feeling in the water. High-cut thigh provides maximum freedom of movement, makes legs appear longer.

Polyester 85%, Spandex 15%

Art.	3	4	5	6	7
MW	XS	S	M	L	XL



M0150 17 D3W



Leg:
High

VICTORIA

SHAPING SWIMSUIT.

Special mesh net provides necessary support in the stomach and sides, creating a beautifully contoured figure. Special cut for figure shaping, semi-open back, wide straps, additional support in chest and stomach areas. Training fabric is maximum durability, resistant to chlorine and dries fast. Polyester 100%

Art.	3	4	5	6	7	8
MW	L	XL	2XL	3XL	4XL	5XL



M0145 01 □ 01W

M0145 01 □ 17W

Leg:
Medium

FIT

SHAPING SWIMSUIT.

Special mesh net provides necessary support in the stomach and sides, creating a beautifully contoured figure. Special cut for figure shaping, semi-open back, adjustable straps, additional support in chest and stomach areas. Medium-cut thigh provides comfort and freedom of movement. Polyamide 80%, Elastane 20%

Art.	3	4	5	6	7	8
MW	L	XL	2XL	3XL	4XL	5XL



M0142 01 □ 04W

M0142 01 □ 16W

Leg:
Medium

ACTUALE

SHAPING SWIMSUIT.

Special mesh net provides necessary support in the stomach and sides, creating a beautifully contoured figure. Maximally open back doesn't restrict movement. Medium-cut thigh suitable for any figure, provides comfort and freedom of movement. Polyamide 80%, Elastane 20%

Art.	3	4	5	6	7	8
MW	L	XL	2XL	3XL	4XL	5XL



M0141 12 □ 04W

M0141 12 □ 08W

Leg:
Medium

FLUENT

SHAPING SWIMSUIT.

Special mesh net provides necessary support in the stomach and sides, creating a beautifully contoured figure. Medium-cut thigh suitable for any figure, provides comfort and freedom of movement. Polyamide 80%, Elastane 20%

Art.	3	4	5	6	7	8
MW	L	XL	2XL	3XL	4XL	5XL



M0155 06 □ 01W

SHAPE

SHAPING SWIMSUIT.

Special mesh net provides necessary support in the stomach and sides, creating a beautifully contoured figure. Medium-cut thigh suitable for any figure, provides comfort and freedom of movement.

Nylon 80%, Lycra 20%

Art.	3	4	5	6	7	8
MW	L	XL	2XL	3XL	4XL	5XL



M0142 03 □ 08W



M0142 03 □ 17W



Leg:
Medium

SHAPE

SHAPING SWIMSUIT.

Special mesh net provides necessary support in the stomach and sides, creating a beautifully contoured figure. Medium-cut thigh suitable for any figure, provides comfort and freedom of movement.

Polyamide 80%, Elastane 20%

Art.	3	4	5	6	7	8
MW	L	XL	2XL	3XL	4XL	5XL



M0140 03 □ E4W



M0140 05 □ E6W



M0140 05 □ E5W



Leg:
Medium

LEA

SHAPING SWIMSUIT.

Special mesh net provides necessary support in the stomach and sides, creating a beautifully contoured figure. Wired cups and adjustable strap provide improved chest support. Medium-cut thigh suitable for any figure, provides comfort and freedom of movement.

Polyamide 80%, Elastane 20%

Art.	3	4	5	6	7
MW	L	XL	2XL	3XL	4XL



M0140 04 □ E5W



M0140 04 □ E6W



M0140 02 □ E2W



Leg:
Medium

MARIA

SHAPING SWIMSUIT.

Special mesh net provides necessary support in the stomach and sides, creating a beautifully contoured figure. Semi-open back, wide straps, additional support in chest and stomach areas. Molded foam cups for a smooth fit while swimming and ideal figure.

Polyamide 80%, Elastane 20%

Art.	3	4	5	6	7
MW	L	XL	2XL	3XL	4XL



M0140 01 □ M1W



Leg:
Medium

LADA

JUNIOR SWIMSUIT ANTICHLOR.

LADA swimsuit is ideal for regular training. Open back and a high-cut thigh provides maximum freedom of movement and comfort in use. Made of extra-durable chlorine-resistant fabric.

Dark colors LADA unlined.

Polyester 100%

Art.	5	6	7	8
MW	M	L	XL	2XL



M1409 18 □ 21W



M1409 18 □ 03W



M1409 18 □ 01W



Leg:
High



M1409 18 □ 18W



M1409 18 □ 15W



Leg:
High

SALUT

JUNIOR SWIMSUIT ANTICHLOR.

Swimsuit with semi-open back and wide straps. Provides reliability and comfort in use. High-cut thigh provides maximum freedom of movement, makes legs appear longer. Made of extra-durable chlorine-resistant fabric. For regular training in the pool.

Polyester 100%

Art.	5	6	7	8
MW	M	L	XL	2XL



M1409 12 □ 03W



M1409 12 □ 01W



Leg:
Medium



M1409 12 □ 18W



M1409 12 □ 05W



Leg:
Medium

CROSSBACK

JUNIOR SWIMSUIT ANTICHLOR.

An open back and thin, double straps provide additional freedom of arm movement and a light feeling in the water. Medium-cut thigh suitable for any figure, provides comfort and freedom of movement. Front side of swimsuit is duplicated on lining. Made of extra-durable chlorine-resistant fabric. Polyester 100%

Art.	5	6	7	8
MW	M	L	XL	2XL



M1409 13 □ 05W



M1409 13 □ 03W



M1409 13 □ 01W



Leg:
Medium



M1409 13 □ 18W



Leg:
Medium

DARIA

JUNIOR SWIMSUIT ANTICHLOR.

An open back and thin straps provide additional freedom of arm movement and a light feeling in the water. High-cut thigh provides maximum freedom of movement. Made of extra-durable chlorine-resistant fabric. For regular training in the pool. Maximum protection from chlorine. Polyester 100%. Lining – Polyester 92%, Elastane 8%.

Art.	5	6	7	8
MW	M	L	XL	2XL



M1409 14 □ 05W



M1409 14 □ 09W



M1409 14 □ 01W



Leg:
High

WATERPOLO

WOMEN SWIMTRUNKS ANTICHLOR.

WATERPOLO swimsuit with completely closed back is ideal for water polo trainings and competitions. Made of extra-durable chlorine-resistant fabric, the model features additional zipper blockers and strengthened seams, allowing you to stay focused on the game. Polyester 100%. Lining – Nylon 92%, Spandex 8%.

Art.	5	6	7	8
MW	M	L	XL	2XL



M0169 02 03W



M0169 02 01W



Leg:
High

CROSSFIT TOP

JUNIOR TOP ANTICHLOR.

Top with thin straps. Double straps provide additional freedom of arm movement and a light feeling in the water. Front side of swimsuit is duplicated on lining. Made of extra-durable chlorine-resistant fabric. For regular training in the pool. Polyester 100%

Art.	5	6	7	8
MW	M	L	XL	2XL



M1468 06 01W



CROSSFIT BOTTOM

JUNIOR TRUNKS ANTICHLOR.

Low-rise of swimtrunks provides comfort and maximum freedom of movement. Front side of swimsuit is duplicated on lining. Made of extra-durable chlorine-resistant fabric. For regular training in the pool. Polyester 100%

Art.	5	6	7	8
MW	M	L	XL	2XL



M1468 07 01W



Leg:
High



FLASH

JUNIOR SWIMSUIT ANTICHLOR.

An open back and thin straps provide additional freedom of arm movement and a light feeling in the water. High-cut thigh provides maximum freedom of movement. Made of extra-durable chlorine-resistant fabric. For regular training in the pool. Maximum protection from chlorine.

Polyester 100%

Art.	5	6	7	8
MW	M	L	XL	2XL



M1400 07 ☐ F2W



Leg:
High

FLASH

JUNIOR SWIMSUIT ANTICHLOR.

An open back and thin straps provide additional freedom of arm movement and a light feeling in the water. High-cut thigh provides maximum freedom of movement. Made of extra-durable chlorine-resistant fabric. For regular training in the pool. Maximum protection from chlorine.

Polyester 100%

Art.	5	6	7	8
MW	M	L	XL	2XL



M1400 26 ☐ Z4W



M1400 21 ☐ A7W



M1400 13 ☐ J4W



Leg:
High

CROSSBACK

JUNIOR SWIMSUIT ANTICHLOR.

An open back and thin, double straps provide additional freedom of arm movement and a light feeling in the water. Medium-cut thigh suitable for any figure, provides comfort and freedom of movement. Front side of swimsuit is duplicated on lining. Made of extra-durable chlorine-resistant fabric. Polyester 100%

Art.	5	6	7	8
MW	M	L	XL	2XL



M1400 20 ☐ E7W



M1400 08 ☐ E2W



Leg:
Medium

DARIA

JUNIOR SWIMSUIT ANTICHLOR.

An open back and thin straps provide additional freedom of arm movement and a light feeling in the water. High-cut thigh provides maximum freedom of movement. Made of extra-durable chlorine-resistant fabric. For regular training in the pool. Maximum protection from chlorine.

Polyester 100%. Lining – Polyester 92%, Elastane 8%.

Art.	5	6	7	8
MW	M	L	XL	2XL



M1400 09 ☐ D1W



Leg:
High

SALUT

JUNIOR SWIMSUIT ANTICHLOR.

Swimsuit with semi-open back and wide straps. Provides reliability and comfort in use. High-cut thigh provides maximum freedom of movement, makes legs appear longer. Made of extra-durable chlorine-resistant fabric. For regular training in the pool. Polyester 100%

Art.	5	6	7	8
MW	M	L	XL	2XL



M1400 15 ☐ B2W



M1400 10 ☐ A5W



Leg:
Hight

NERA

JUNIOR SWIMSUIT ANTICHLOR.

An open back and thin straps provide additional freedom of arm movement and a light feeling in the water. Medium-cut thigh suitable for any figure, provides comfort and freedom of movement. Made of extra-durable chlorine-resistant fabric. For regular training in the pool. Polyester 100%

Art.	5	6	7	8
MW	M	L	XL	2XL



M1400 14 ☐ N2W



Leg:
Hight

VOLLEY TOP

JUNIOR TOP ANTICHLOR.

Top with thin straps. Thin straps provide additional freedom of arm movement and a light feeling in the water. Made of extra-durable chlorine-resistant fabric. Made of extra-durable chlorine-resistant fabric. For regular training in the pool. Polyester 100%

Art.	5	6	7	8
MW	M	L	XL	2XL



M1400 22 ☐ W2W

M1400 24 ☐ X1W

VOLLEY BOTTOM

JUNIOR TRUNKS ANTICHLOR.

Trunks with medium-cut thigh. Suitable for any figure, provides comfort and freedom of movement. Made of extra-durable chlorine-resistant fabric. For regular training in the pool. Polyester 100%

Art.	5	6	7	8
MW	M	L	XL	2XL



M1400 23 ☐ W2W

M1400 25 ☐ X1W

Leg:
Medium

FRISKY TOP

WOMEN SWIMSUIT ANTICHLOR.

Top with thin straps. Thin straps emphasize elegance of neck and shoulders, provide additional freedom of arm movement and a light feeling in the water. Front side of swimsuit is duplicated on lining. Made of extra-durable chlorine-resistant fabric. For regular training in the pool. Polyester 100%

Art.	5	6	7	8
MW	M	L	XL	2XL



M1400 03 ☐ BOW

M1400 01 ☐ J3W

FRISKY BOTTOM

JUNIOR TRUNKS ANTICHLOR.

Low-rise of swimtrunks provides comfort and maximum freedom of movement. Front side of swimsuit is duplicated on lining. Made of extra-durable chlorine-resistant fabric. For regular training in the pool. Polyester 100%



M1400 04 ☐ BOW

M1400 02 ☐ J3W

Leg:
High

CROSSFIT TOP

JUNIOR TOP ANTICHLOR.

Top with thin straps. Double straps provide additional freedom of arm movement and a light feeling in the water. Front side of swimsuit is duplicated on lining. Made of extra-durable chlorine-resistant fabric. For regular training in the pool.

Polyester 100%

Art.	5	6	7	8
MW	M	L	XL	2XL



M1400 18 □ D1W

M1400 16 □ B2W

CROSSFIT BOTTOM

JUNIOR TRUNKS ANTICHLOR.

Low-rise of swimtrunks provides comfort and maximum freedom of movement. Front side of swimsuit is duplicated on lining. Made of extra-durable chlorine-resistant fabric. For regular training in the pool.

Polyester 100%

Art.	5	6	7	8
MW	M	L	XL	2XL



M1400 19 □ D1W

M1400 17 □ B2W

Leg:
Height

RELAX TOP

JUNIOR BIKINI ANTICHLOR.

Bikini top with thin straps. Adjustable straps emphasize elegance of neck and shoulders, provide additional freedom of arm movement and comfortable fit. Front side of swimsuit is duplicated on lining. Made of extra-durable chlorine-resistant fabric.

Polyester 100%

Art.	5	6	7	8
MW	M	L	XL	2XL



M1400 05 □ B0W

M1400 11 □ A5W

RELAX BOTTOM

JUNIOR BIKINI ANTICHLOR.

Bikini bottom with thin straps for easy regulation. Low-rise of swimtrunks provides comfort and maximum freedom of movement. Front side of swimsuit is duplicated on lining. Made of extra-durable chlorine-resistant fabric.

Polyester 100%

Art.	5	6	7	8
MW	M	L	XL	2XL



M1400 06 □ B0W

M1400 12 □ A5W

Leg:
Height

NERA

JUNIOR SWIMSUIT.

An open back and thin straps provide additional freedom of arm movement and a light feeling in the water. BASE Xtra Life fabric has high chlorine resistant and long-lasting wear. Medium-cut thigh suitable for any figure, provides comfort and freedom of movement. Polyamide 80%, Elastane 20%

Art.	5	6	7	8
MW	M	L	XL	2XL



M0105 01 □ 01W



M0105 01 □ 03W



Leg:
Medium



M0105 01 □ 08W



M0105 01 □ 11W



Leg:
Medium

AFRA

JUNIOR SWIMSUIT.

A closed back, an athletic, ergonomic cut provides flexible movement and comfort in use. Medium-cut thigh suitable for any figure, provides comfort and freedom of movement. BASE Xtra Life fabric has high chlorine resistant and long-lasting wear. Polyamide 80%, Elastane 20%

Art.	5	6	7	8
MW	M	L	XL	2XL



M0105 02 □ 03W



M0105 02 □ 01W



Leg:
High

FRISKY TOP

JUNIOR TOP.

Top with thin straps. Thin straps emphasize elegance of neck and shoulders, provide additional freedom of arm movement and a light feeling in the water. Front side of swimsuit is duplicated on lining. Made of extra-durable chlorine-resistant fabric. BASE fabric has high chlorine resistant and long-lasting wear.

Polyamide 80%, Elastane 20%

Art.	5	6	7	8
MW	M	L	XL	2XL



M0108 04 □ 11W

M0108 10 □ 01W

Leg:
Hight

FRISKY BOTTOM

JUNIOR TRUNKS.

Low-rise of swimtrunks provides comfort and maximum freedom of movement. Front side of swimsuit is duplicated on lining. BASE fabric has high chlorine resistant and long-lasting wear.

Polyamide 80%, Elastane 20%

Art.	5	6	7	8
MW	M	L	XL	2XL



M0108 05 □ 11W

M0108 11 □ 01W

Leg:
Hight

RELAX TOP

JUNIOR BIKINI ANTICHLOR.

Bikini top with thin straps. Adjustable straps emphasize elegance of neck and shoulders, provide additional freedom of arm movement and comfortable fit. Front side of swimsuit is duplicated on lining. BASE fabric has high chlorine resistant and long-lasting wear.

Polyamide 80%, Elastane 20%

Art.	5	6	7	8
MW	M	L	XL	2XL



M0108 06 □ 16W

M0108 12 □ 01W

Leg:
Hight

RELAX BOTTOM

JUNIOR BIKINI ANTICHLOR.

Bikini bottom with thin straps for easy regulation. Low-rise of swimtrunks provides comfort and maximum freedom of movement. Front side of swimsuit is duplicated on lining. BASE fabric has high chlorine resistant and long-lasting wear.

Polyamide 80%, Elastane 20%

Art.	5	6	7	8
MW	M	L	XL	2XL



M0108 07 □ 16W

M0108 13 □ 01W

Leg:
Hight

SLIDE

JUNIOR SWIMSUIT.

Swimsuit with power back shape and mid thigh length. The shorts tight hips, completely hide the buttocks and provide comfort while training. The BASE XtraLife fabric has high chlorine resistance, long-lasting wear, and improved compression characteristics. Ergonomic cut provides flexible movement and comfort in use.
Nylon 78%, Spandex 22%
Lining – Nylon 100%

Art.	5	6	7	8
MW	M	L	XL	2XL



M0107 06 □ 03W

M0107 06 □ 01W

Leg:
Mid thigh length

ATHLETIC

JUNIOR SWIMSUIT.

Swimsuit with power back shape and knee length. The shorts tight hips, completely hide the buttocks and provide comfort while training. The BASE XtraLife fabric has high chlorine resistance, long-lasting wear, and improved compression characteristics. Knee length provides comfortable fit and necessary muscle compression.
Nylon 78%, Spandex 22%
Lining – Nylon 100%

Art.	5	6	7	8
MW	M	L	XL	2XL



M0107 07 □ 11W

M0107 07 □ 16W

Leg:
Knee length

START

JUNIOR SWIMTRUNKS.

Open back and an athletic, ergonomic cut provides flexible movement and comfort in use. High-cut thigh provides maximum freedom of movement, makes legs appear longer. BASE fabric provides ideal fit, long-lasting wear and improved compression characteristics.

Polyester 85%, Spandex 15%

Art.	5	6	7	8
MW	M	L	XL	2XL



M0100 06 □ N9W



M0100 01 □ S2W



Leg:
Hight

RATE

JUNIOR SWIMSUIT.

An open back and an athletic, ergonomic cut provides flexible movement and comfort in use. Medium-cut thigh suitables for any figure, provides comfort and freedom of movement. BASE fabric provides ideal fit, long-lasting wear and improved compression characteristics.

Polyester 85%, Spandex 15%

Art.	5	6	7	8
MW	M	L	XL	2XL



M0100 02 □ S0W



Leg:
Hight

AFRA

JUNIOR SWIMSUIT.

A closed back, an athletic, ergonomic cut provides flexible movement and comfort in use. Medium-cut thigh suitable for any figure, provides comfort and freedom of movement. BASE Xtra Life fabric has high chlorine resistant and long-lasting wear.

Polyester 85%, Spandex 15%

Art.	5	6	7	8
MW	M	L	XL	2XL



M0100 02 □ S1W



Leg:
Hight

DUO

JUNIOR SWIMSUIT.

An open back and thin straps provide additional freedom of arm movement and a light feeling in the water. High-cut thigh provides maximum freedom of movement, makes legs appear longer.

Polyester 85%, Spandex 15%

Art.	5	6	7	8
MW	M	L	XL	2XL



M0100 03 □ D2W



Leg:
Hight

CROSSBACK

JUNIOR SWIMSUIT.

An open back and thin, double straps provide additional freedom of arm movement and a light feeling in the water. Medium-cut thigh suitable for any figure, provides comfort and freedom of movement. Front side of swimsuit is duplicated on lining.

Polyester 85%, Spandex 15%

Art.	5	6	7	8
MW	M	L	XL	2XL



M0100 04 ☐ C7W



Leg:
Medium

NERA

JUNIOR SWIMSUIT.

An open back and thin straps provide additional freedom of arm movement and a light feeling in the water. BASE Xtra Life fabric has high chlorine resistant and long-lasting wear. Medium-cut thigh suitable for any figure, provides comfort and freedom of movement.

Polyester 85%, Spandex 15%

Art.	5	6	7	8
MW	M	L	XL	2XL



M0100 05 ☐ N9W



Leg:
Medium

AFRA

GIRLS SWIMSUIT.

A closed back, an athletic, ergonomic cut provides flexible movement and comfort in use. Medium-cut thigh suitable for any figure, provides comfort and freedom of movement. BASE Xtra Life fabric has high chlorine resistant and long-lasting wear.

Polyamide 80%, Elastane 20%

Art.	2	3	4
MW	2XS	XS	S



M0192 03 □ 01W

Leg:
Medium

APRIL

GIRLS SWIMSUIT.

Open back and an athletic, ergonomic cut provides flexible movement and comfort in use. High-cut thigh maximum freedom of movement. BASE fabric has high chlorine resistant and long-lasting wear.

Polyamide 80%, Elastane 20%

Art.	2	3	4
MW	2XS	XS	S



M0190 01 □ 01W



M0190 01 □ 16W



M0190 01 □ 11W



Leg:
High

APRIL

GIRLS SWIMSUIT.

Open back and an athletic, ergonomic cut provides flexible movement and comfort in use. High-cut thigh maximum freedom of movement. BASE fabric has high chlorine resistant and long-lasting wear.

Polyester 85%, Spandex 15%

Art.	2	3	4
MW	2XS	XS	S



M0190 04 □ K8W



M0190 02 □ K3W



M0190 03 □ K1W



Leg:
High

LILY

GIRLS SWIMSUIT.

One piece kids suit with open back. Medium leg cut. Can be used as for swimming pool so for the beach recreation. BASE fabric has high chlorine resistant and long-lasting wear.

Polyester 85%, Spandex 15%

Art.	2	3	4
MW	2XS	XS	S



M0190 05 □ K2W



Leg:
High

BELLA

GIRLS SWIMSUIT.

One piece kids suit with open back. Medium leg cut.
Can be used as for swimming pool so for the beach recreation.

Polyester 85%, Spandex 15%

Art.	2	3	4
MW	2XS	XS	S



M0190 06 □ K6W

Leg:
Medium

JOY

GIRLS SWIMSUIT.

Two piece kids suit with open back. Medium leg cut.
Can be used as for swimming pool so for the beach recreation.

Polyester 85%, Spandex 15%

Art.	2	3	4
MW	2XS	XS	S



M0190 08 □ K9W

M0190 07 □ K7W

Leg:
Medium

MAD BUBBLES

AQUANAPPIES.

Aquanappies for kids. Snug fitting with protective layers.
Hold Baby's leaks. Fabric – Polyester 100%,
Lining – Nylon 100%.

Art.	2	3	4
MW	S	M	L



M0796 01 □ 11W

MEN'S SIZE CHART

MW size	XXS	XS	S	M	L	XL	XXL	3XL	4XL	5XL	6XL	7XL	8XL
Chest (cm)	75-80	81-85	86-92	93-97	98-102	103-108	108-112	113-117	118-122	123-127	128-132	133-137	138-142
Waist (cm)	68-72	73-77	78-82	83-89	90-96	97-102	103-108	108-114	115-120	121-126	127-132	133-138	139-144
Hips (cm)	75-80	81-86	87-92	93-98	99-104	105-110	111-115	116-120	121-125	126-130	131-135	135-139	140-144
International size conversion:													
RUS	42	44	46	48	50	52	54	56	58	60	62	64	66
USA / GB	26	28	30	32	34	36	38	40	42	44	46	48	50
F	12-13	14-15	75	80	85	90	95	100	105	110	115	120	125
I	40	42	44	46	48	50	52	54	56	58	60	62	64
D	152	164	3	4	5	6	7	8	9	10	11	12	13
AUS	12-13 JR	14-15 JR	12	14	16	18	20	22	24	26	28	30	32

JUNIOR AND KIDS SIZE CHART

MW size mark	3XS	XXS	XS	S	M	L	XL	XXL
Height (cm)	86-92	98-104	110-116	122-128	134-140	146-152	152-158	158-164
Chest (cm)	48-52	52-56	56-60	60-64	64-70	70-75	75-80	80-85
Waist (cm)	44-48	48-52	52-56	56-60	60-64	64-68	68-72	73-77
Hips (cm)	45-50	50-55	55-60	60-65	65-70	70-75	75-80	81-86
Age	1-2	2-3	4-5	6-7	8-9	10-11	12-13	14-15
International size conversion:								
RUS	26	28	30	32	34	36	38	40
USA	2T	3T	4T	21	22	24	26	28
GB	18	19	20	21	22	24	26	28
F / I / AUS	1-2	2-3	4-5	6-7	8-9	10-11	12-13	14-15
D	92	98	110	116	128	140	152	164

POWER

MEN JAMMER ANTICHLOR.

Creates additional compression for thigh muscles, increasing the effectiveness of training session. Makes it possible to decrease drag in the water, increasing speed.

Polyester 100%

Art.	3	4	5	6	7
MW	XS	S	M	L	XL



M1489 03 □ 05W

M1489 03 □ 03W

M1489 03 □ 01W

Low waist level

SPIRIT

MEN SWIMTRUNKS ANTICHLOR.

Trunk-shorts suitable for training in the pool as well as relaxing on the beach. Medium-rise provides comfort, doesn't limit movement. Made of chlorine-resistant fabric.

Polyester 100%

Art.	3	4	5	6	7	8
MW	XS	S	M	L	XL	2XL



M1422 01 □ 04W

M1422 01 □ 01W

Medium waist level

OLYMP

MEN SWIMTRUNKS ANTICHLOR.

Trunk-shorts suitable for regular training in the pool. Medium-rise provides comfort, doesn't limit movement. Made of extra-durable chlorine-resistant fabric.

Polyester 100%

Art.	3	4	5	6	7	8
MW	XS	S	M	L	XL	2XL



M1452 02 □ 03W

M1452 02 □ 01W

Medium waist level

X-TREME

MEN SWIMTRUNKS ANTICHLOR.

Trunk shorts suitable for regular training. Low-rise provides comfort and maximum freedom of movement. Made of extra-durable chlorine-resistant fabric.

Polyester 100%

Art.	3	4	5	6	7	8
MW	XS	S	M	L	XL	2XL



M0229 12 □ 10W

M0229 12 □ 01W

Low waist level



M0229 12 □ 05W

M0229 12 □ 03W

Low waist level

SX

MEN SWIMTRUNKS ANTICHLOR.

Trunk-shorts suitable for training in the pool as well as relaxing on the beach. Low-rise provides comfort and maximum freedom of movement.

Polyester 100%

Art.	3	4	5	6	7	8
MW	XS	S	M	L	XL	2XL



M1425 01 10W



M1425 01 01W



Low waist level



M1425 01 05W



M1425 01 03W

Low waist level

CULT

MEN SWIMTRUNKS ANTICHLOR.

Classic trunks. Comfortable fit, suitable for training in the pool as well as relaxing on the beach. Low-rise provides comfort and maximum freedom of movement.

Polyester 100%

Art.	3	4	5	6	7	8
MW	XS	S	M	L	XL	2XL



M1412 02 10W



M1412 02 01W

Low waist level



M1412 02 05W



M1412 02 03W

Low waist level

WATERPOLO

MEN SWIMTRUNKS ANTICHLOR.

Swimtrunks is ideal for water polo trainings and competitions. Has strengthened seams to ensure a secure fit and superior comfort. Made of chlorine-resistant fabric.

Polyester 100%

Art.	3	4	5	6	7	8
MW	XS	S	M	L	XL	2XL



M0259 01 04W



M0259 01 01W

Low waist level

DRIVE

MEN JAMMER ANTICHLOR.

Creates additional compression for thigh muscles, increasing the effectiveness of training session. Makes it possible to decrease drag in the water, increasing speed.

Polyester 100%

Art.	3	4	5	6	7
MW	XS	S	M	L	XL



M1430 14 □ D7W

Low waist level

DRIVE

MEN JAMMER ANTICHLOR.

Creates additional compression for thigh muscles, increasing the effectiveness of training session. Makes it possible to decrease drag in the water, increasing speed.

Polyester 100%

Art.	3	4	5	6	7
MW	XS	S	M	L	XL



M1430 09 □ A1W

M1430 04 □ J3W

M1430 01 □ J1W

Low waist level



M1430 10 □ J4W

M1430 17 □ X1W

M1430 06 □ E2W

Low waist level

SPURT

MEN JAMMER ANTICHLOR.

Creates additional compression for thigh muscles, increasing the effectiveness of training session. Makes it possible to decrease drag in the water, increasing speed.

Polyester 100%

Art.	3	4	5	6	7
MW	XS	S	M	L	XL



M1430 07 □ E1W

M1430 02 □ J1W

M1430 05 □ Y6W

Low waist level



M1430 13 □ A7W

M1430 11 □ J4W

M1430 16 □ A5W

Low waist level

POWER

MEN JAMMER ANTICHLOR.

Creates additional compression for thigh muscles, increasing the effectiveness of training session. Makes it possible to decrease drag in the water, increasing speed.

Polyester 100%

Art.	3	4	5	6	7
MW	XS	S	M	L	XL



M1430 12 □ N2W

M1430 03 □ J1W

M1430 08 □ E1W

Low waist level



M1420 13 □ W2W

Low waist level

RACER

MEN SWIMTRUNKS ANTICHLOR.

Tight-fitting trunk shorts. Suitable for training in the pool and relaxing on the beach. Low-rise provides comfort and maximum freedom of movement.

Polyester 100%

Art.	3	4	5	6	7
MW	XS	S	M	L	XL



M1420 01 □ J1W

M1420 03 □ Y6W

Medium waist level



M1420 11 □ E7W

M1420 14 □ X1W

Medium waist level



M1420 13 □ W2W

Medium waist level

X-TREME

MEN SWIMTRUNKS ANTICHLOR.

Trunk shorts suitable for regular training. Low-rise provides comfort and maximum freedom of movement. Made of extra-durable chlorine-resistant fabric. Polyester 100%

Art.	3	4	5	6	7
MW	XS	S	M	L	XL



M1420 05 A5W



M1420 16 A1W



Low waist level



M1420 02 J3W



M1420 06 E1W



Low waist level



M1420 15 X1W



M1420 04 Y6W



Low waist level



M1420 09 J4W



Low waist level

CULT

MEN SWIMTRUNKS ANTICHLOR.

Classic trunks. Comfortable fit, suitable for training in the pool as well as relaxing on the beach. Low-rise provides comfort and maximum freedom of movement. Polyester 100%

Art.	3	4	5	6	7
MW	XS	S	M	L	XL



M1420 17 C5W



Low waist level

RUSH

MEN SWIMTRUNKS ANTICHLOR.

Classic trunks. Comfortable fit, suitable for training in the pool and relaxing on the beach. Low-rise provides comfort and maximum freedom of movement.

Polyester 100%

Art.	3	4	5	6	7
MW	XS	S	M	L	XL



M1420 07 ☐ E2W



M1420 08 ☐ A5W



Low waist level



M1420 12 ☐ A7W



M1420 10 ☐ N2W



Low waist level

DRAG SHORTS

MEN RESISTANCE SHORTS.

Create additional resistance in the water, allowing to develop strength and endurance. Made from durable and wear-resistant fabric.

Polyester 100%

Art.	2	3	4	5	6	7
MW	XXS	XS	S	M	L	XL



M0256 01 ☐ 10W

Low waist level

FORT

MEN SWIMTRUNKS.

Tight-fitting trunk shorts suitable for training in the pool and relaxing on the beach. Low-rise provides comfort and maximum freedom of movement.

Polyamide 80%, Elastane 20%

Art.	3	4	5	6	7	8
MW	XS	S	M	L	XL	2XL



M0229 02 10W



M0229 02 01W



Low waist level



M0229 02 05W



M0229 02 03W



Low waist level

SPLASH

MEN SWIMTRUNKS.

Basic swim shorts for swimming and leisure use.

Medium-rise provides comfort, doesn't limit movement.

Polyamide 80%, Elastane 20%

Art.	3	4	5	6	7	8
MW	XS	S	M	L	XL	2XL



M0229 01 03W



M0229 01 09W



Medium waist level

SPLASH PLUS

MEN SWIMTRUNKS ANTICHLOR.

Basic swim shorts of large sizes. Suitable for training in the pool and relaxing on the beach. Medium-rise provides comfort, doesn't limit movement.

Polyamide 80%, Elastane 20%

Art.	1	2	3	4
MW	3XL	4XL	5XL	6XL



M0229 03 09W



M0229 03 03W



Medium waist level

X-PERT

MEN SWIMTRUNKS.

Suitable for training in the pool as well as relaxing on the beach. Medium-rise provides comfort, doesn't limit movement.

Polyester 85%, Spandex 15%

Art.	3	4	5	6	7	8	9	1
MW	XS	S	M	L	XL	2XL	3XL	4XL



M0220 01 ☐ E1W

Medium waist level

SPLASH

MEN SWIMTRUNKS.

Tight-fitting trunk shorts. Suitable for training in the pool and relaxing on the beach. Medium-rise provides comfort, doesn't limit movement.

Polyester 85%, Spandex 15%

Art.	3	4	5	6	7	8
MW	XS	S	M	L	XL	2XL



M0220 02 ☐ E3W

M0220 03 ☐ E1W

Low waist level

FORT

MEN SWIMTRUNKS.

Tight-fitting trunk shorts suitable for training in the pool and relaxing on the beach. Low-rise provides comfort and maximum freedom of movement.

Polyester 85%, Spandex 15%

Art.	3	4	5	6	7
MW	XS	S	M	L	XL



M0210 04 ☐ F6W

M0210 01 ☐ E3W

Medium waist level

FORCE

MEN SWIMTRUNKS.

Comfortable fit, suitable for training in the pool and relaxing on the beach. Low-rise provides comfort and maximum freedom of movement.

Polyester 85%, Spandex 15%

Art.	3	4	5	6	7
MW	XS	S	M	L	XL



M0210 03 ☐ F6W

M0210 02 ☐ E3W

Low waist level

ZEUS

MEN SWIMTRUNKS.

Trunks for larger sizes. Suitable for training in the pool and relaxing on the beach. Medium-rise provides comfort and freedom of movement.

Polyester 85%, Spandex 15%

Art.	1	2	3	4	5	6
MW	3XL	4XL	5XL	6XL	7XL	8XL



M0210 05 ☐ E1W

Low waist level

POWER

JUNIOR JAMMER ANTICHLOR.

Creates additional compression for thigh muscles, increasing the effectiveness of training session. Makes it possible to decrease drag in the water, increasing speed.

Polyester 100%

Art.	5	6	7	8
MW	M	L	XL	2XL



M1489 03 05W

M1489 03 03W

M1489 03 01W

Low waist level

SPIRIT

JUNIOR SWIMTRUNKS ANTICHLOR.

Trunk-shorts suitable for training in the pool as well as relaxing on the beach. Medium-rise provides comfort, doesn't limit movement. Made of chlorine-resistant fabric.

Polyester 100%

Art.	5	6	7	8
MW	M	L	XL	2XL



M1495 01 04W

M1495 01 01W

Low waist level

OLYMP

JUNIOR SWIMTRUNKS ANTICHLOR.

Trunk-shorts suitable for training in the pool as well as relaxing on the beach. Medium-rise provides comfort, doesn't limit movement. Made of chlorine-resistant fabric.

Polyester 100%

Art.	5	6	7	8
MW	M	L	XL	2XL



M1495 02 03W

M1495 02 01W

Low waist level

X-TREME

JUNIOR SWIMTRUNKS ANTICHLOR.

Trunk shorts suitable for regular training. Low-rise provides comfort and maximum freedom of movement. Made of extra-durable chlorine-resistant fabric.

Polyester 100%

Art.	5	6	7	8
MW	M	L	XL	2XL



M1499 03 10W

M1499 03 01 W

Low waist level



M1499 03 05W

M1499 03 03W

Low waist level

SX

JUNIOR SWIMTRUNKS ANTICHLOR.

Trunk-shorts suitable for training in the pool as well as relaxing on the beach. Low-rise provides comfort and maximum freedom of movement.

Polyester 100%

Art.	5	6	7	8
MW	M	L	XL	2XL



M1495 03 10W



M1495 03 01W



Low waist level



M1495 03 05W



M1495 03 03W

Low waist level

CULT

JUNIOR SWIMTRUNKS ANTICHLOR.

Classic trunks. Comfortable fit, suitable for training in the pool as well as relaxing on the beach. Low-rise provides comfort and maximum freedom of movement.

Polyester 100%

Art.	5	6	7	8
MW	M	L	XL	2XL



M1455 01 10W



M1455 01 01W



Low waist level



M1455 01 05W



M1455 01 03W

Low waist level

WATERPOLO

Junior swimtrunks antichlor.

Swimtrunks is ideal for water polo trainings and competitions. Has strengthened seams to ensure a secure fit and superior comfort. Made of chlorine-resistant fabric.

Polyester 100%

Art.	5	6	7	8
MW	M	L	XL	2XL



M0259 02 04W



M0259 02 01W



Low waist level

DRIVE

JUNIOR SWIMTRUNKS ANTICHLOR.

Creates additional compression for thigh muscles, increasing the effectiveness of training session. Makes it possible to decrease drag in the water, increasing speed.

Polyester 100%

Art.	5	6	7	8
MW	M	L	XL	2XL



M1480 04 □ D8W

Low waist level

DRIVE

JUNIOR SWIMTRUNKS ANTICHLOR.

Creates additional compression for thigh muscles, increasing the effectiveness of training session. Makes it possible to decrease drag in the water, increasing speed.

Polyester 100%

Art.	5	6	7	8
MW	M	L	XL	2XL



M1480 02 □ J3W

M1480 01 □ J1W

M1480 05 □ E2W

Low waist level



M1480 06 □ J4W

Low waist level

SPURT

JUNIOR SWIMTRUNKS ANTICHLOR.

Creates additional compression for thigh muscles, increasing the effectiveness of training session. Makes it possible to decrease drag in the water, increasing speed.

Polyester 100%

Art.	5	6	7	8
MW	M	L	XL	2XL



M1480 08 □ A7W

M1480 03 □ Y6W

Low waist level

POWER

JUNIOR SWIMTRUNKS ANTICHLOR.

Creates additional compression for thigh muscles, increasing the effectiveness of training session. Makes it possible to decrease drag in the water, increasing speed.

Polyester 100%

Art.	5	6	7	8
MW	M	L	XL	2XL



M1480 09 □ W2W

M1480 07 □ N2W

Low waist level

X-TREME

JUNIOR SWIMTRUNKS ANTICHLOR.

Trunk shorts suitable for regular training. Low-rise provides comfort and maximum freedom of movement. Made of extra-durable chlorine-resistant fabric. Polyester 100%

Art.	5	6	7	8
MW	M	L	XL	2XL



M1450 03 ☐ J3W



M1450 04 ☐ Y6W



Low waist level



M1450 09 ☐ X1W



M1450 05 ☐ J4W



Low waist level

RACER

JUNIOR SWIMTRUNKS ANTICHLOR.

Tight-fitting trunk shorts. Suitable for training in the pool and relaxing on the beach. Low-rise provides comfort and maximum freedom of movement. Polyester 100%

Art.	5	6	7	8
MW	M	L	XL	2XL



M1450 07 ☐ E7W



M1450 02 ☐ J1W



Medium waist level



M1450 08 ☐ W2W



Medium waist level

CULT

JUNIOR SWIMTRUNKS ANTICHLOR.

Classic trunks. Comfortable fit, suitable for training in the pool as well as relaxing on the beach. Low-rise provides comfort and maximum freedom of movement.

Polyester 100%

Art.	5	6	7	8
MW	M	L	XL	2XL



M1450 01 ☐ C6W

Low waist level

CULT

JUNIOR SWIMTRUNKS ANTICHLOR.

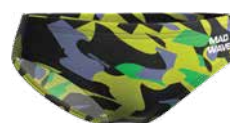
Classic trunks. Comfortable fit, suitable for training in the pool as well as relaxing on the beach. Low-rise provides comfort and maximum freedom of movement.

Polyester 100%

Art.	5	6	7	8
MW	M	L	XL	2XL



M1450 10 ☐ A5W



M1450 06 ☐ N2W



Low waist level

SPLASH

JUNIOR SWIMTRUNKS.

Trunk-shorts suitable for training in the pool as well as relaxing on the beach. Medium-rise provides comfort, doesn't limit movement.

Polyamide 80%, Elastane 20%

Art.	5	6	7	8
MW	M	L	XL	2XL



M0289 04 □ 03W



M0289 04 □ 09W



Medium waist level

FORT

JUNIOR SWIMTRUNKS.

Tight-fitting trunk shorts suitable for training in the pool and relaxing on the beach. Low-rise provides comfort and maximum freedom of movement.

Polyamide 80%, Elastane 20%

Art.	5	6	7	8
MW	M	L	XL	2XL



M1499 04 □ 10W



M1499 04 □ 01W



Low waist level



M1499 04 □ 03W



M1499 04 □ 05W



Low waist level

X-PERT

JUNIOR SWIMTRUNKS.

Suitable for training in the pool as well as relaxing on the beach. Medium-rise provides comfort, doesn't limit movement.

Polyester 85%, Spandex 15%

Art.	5	6	7	8
MW	M	L	XL	2XL



M0280 01 □ E1W



M0280 03 □ Z1W



Medium waist level

SPLASH

JUNIOR SWIMTRUNKS.

Tight-fitting trunk shorts. Suitable for training in the pool and relaxing on the beach. Medium-rise provides comfort, doesn't limit movement.

Polyester 85%, Spandex 15%

Art.	5	6	7	8
MW	M	L	XL	2XL



M0280 02 □ Z1W



M0280 04 □ C1W



Medium waist level

FORT

JUNIOR SWIMTRUNKS.

Full swimsuit with Freedom Back and thin straps. Medium leg height. Training fabric line. Ideal for regular training. Training fabric line.

Polyester 85%, Spandex 15%

Art.	5	6	7	8
MW	M	L	XL	2XL



M1450 01 □ Z1W



M1405 02 □ C1W



Low waist level

ALEX

BOYS SWIMTRUNKS.

Classic trunks with comfort fit. Suitable for training in the pool and relaxing on the beach. Low-rise provides comfort and freedom of movement.

Polyamide 80%, Elastane 20%

Art.	2	3	4
MW	2XS	XS	S



M1469 07 08W



M1469 07 01W



Low waist level

ALEX

BOYS SWIMTRUNKS.

Classic trunks with comfort fit. Suitable for training in the pool and relaxing on the beach. Low-rise provides comfort and freedom of movement.

Polyester 85%, Spandex 15%

Art.	2	3	4
MW	2XS	XS	S



M0240 06 A2W



M0240 05 K5W



Low waist level

SUBMARINE

BOYS SWIMTRUNKS.

Tight-fitting trunk shorts. Suitable for training in the pool and relaxing on the beach. Medium-rise provides comfort, doesn't limit movement.

Polyester 85%, Spandex 15%

Art.	2	3	4
MW	2XS	XS	S



M0290 01 S0W



M0290 02 K4W



Medium waist level

MAD BUBBLES

AQUANAPPIES.

Aquanappies for kids. Snug fitting with protective layers. Hold Baby's leaks. Fabric – Polyester 100%, Lining – Nylon 100%.

Art.	2	3	4
MW	S	M	L



M0796 01 10W



MEN'S SIZE CHART

MW size mark	XS	S	M	L	XL	XXL	3XL	4XL
Chest (cm)	86-90	90-94	94-98	98-102	102-106	106-110	110-114	114-118
Waist (cm)	70-75	75-80	80-85	85-90	90-95	95-100	100-105	105-110
Hips (cm)	87-92	92-97	97-102	102-107	107-112	112-117	117-120	120-125
International size conversion:								
RUS	44	46	48	50	52	54	56	58
USA / GB / I / D / F	XS	S	M	L	XL	XXL	3XL	4XL
AUS	8	10	12	14	16	18	20	22

WOMEN'S SIZE CHART

MW size mark	XS	S	M	L	XL	XXL
Chest (cm)	82-86	86-90	90-94	94-98	98-102	102-106
Waist (cm)	62-66	66-70	70-74	74-79	79-83	83-87
Hips (cm)	88-92	92-96	96-100	100-104	104-108	108-112
International size conversion:						
RUS	42	44	46	48	50	52
USA / GB / I / D / F	XS	S	M	L	XL	XXL
AUS	6	8	10	12	14	18

UNISEX SIZE CHART

MW size mark	XS	S	M	L	XL	XXL	3XL	4XL
Chest (cm)	84-88	88-92	92-96	96-100	100-104	104-108	108-112	112-116
Waist (cm)	60-65	65-70	70-75	75-80	80-85	85-90	90-95	95-100
Hips (cm)	88-93	93-97	97-101	101-105	105-109	109-113	113-117	117-121
International size conversion:								
RUS	42-44	44-46	46-48	48-50	50-52	52-54	54-56	56-58
USA / GB / I / D / F	XS	S	M	L	XL	XXL	3XL	4XL
AUS	6	8	10	12	14	16	18	20

JUNIOR (GIRL AND BOYS) SIZE CHART

MW size mark	XS	S	M	L	XL	XXL
Height (cm)	110-116	122-128	130-140	146-152	152-158	158-164
Chest (cm)	55-60	60-65	65-70	70-75	75-80	80-85
Waist (cm)	53-55	55-59	57-63	59-67	60-71	65-73
Hips (cm)	61-65	65-70	70-75	75-80	80-85	85-90
International size conversion:						
RUS	30	32	34	36	38	40
AUS / GB / I / F	5-6	6-7	8-9	10-11	12-13	14-15
USA	XS	S	M	L	XL	XXL
D	110	116	128	140	152	164

PEAK

PARKA.

The MAD WAVE jacket-parka – a long, insulated unisex model. The parka is multifunctional and is fit both for starts as well as walks around the city. It is made of the waterproof and windproof fabric that removes the excess moisture vapor and keeps an athlete dry. Fleece lining increases the thermal insulation properties of the jacket in conditions of high humidity.

The jacket has an ergonomic cut with the raglan sleeve design for the most comfortable fit. To fasten the jacket there is a front zipper as well as overlap with buttons for extra wind-resistance. The adjustable drawstring hood provides an additional wind protection. There are two front pockets and two inside pockets for keeping documents or swimming equipment.



Art.	3	5	7
MW	XS-S	M-L	XL-XXL

M0979 01 ☐ 01W

PROS

UNISEX TRACK JACKET.

Unisex model is suitable for both men and women. Dual rubber band sleeves and bottom of jacket have double rubber band for added comfort. Mesh inserts in hood and sleeves for added ventilation. Convenient plastic zipper closure.

Polyester 100%

Art.	3	4	5	6	7	8	9
MW	XS	S	M	L	XL	2XL	3XL



M0953 01 ☐ 05W



M0953 01 ☐ 03W



PROS

UNISEX TRACK PANTS.

Unisex model is suitable for both men and women. Elastic waist with drawstring provides a comfortable and reliable fit. Width of pant bottoms can be adjusted. Pockets on the front part.

Polyester 100%



M0954 01 ☐ 05W



M0954 01 ☐ 01W



Art.	3	4	5	6	7	8	9
MW	XS	S	M	L	XL	2XL	3XL

MAD WAVE

UNISEX TRACK JACKET.

Unisex model is suitable for both men and women.
Dual rubber band sleeves and bottom of jacket have
double rubber band for added comfort.
Polyester 100%

Art.	3	4	5	6	7	8	9
MW	XS	S	M	L	XL	2XL	3XL



M0953 02 02W



M0953 02 05W



M0953 02 04W



M0953 02 06W



M0953 02 01W

MAD WAVE

UNISEX TRACK PANTS.

Unisex model is suitable for both men and women. Elastic
waist with drawstring provides a comfortable and reliable
fit. Pockets on the front part.
Polyester 100%

Art.	3	4	5	6	7	8	9
MW	XS	S	M	L	XL	2XL	3XL



M0954 02 04W



M0954 02 05W



M0954 02 01W



PROS

JUNIOR UNISEX TRACK JACKET.

Unisex model is suitable for both boys and girls. Dual rubber band sleeves and bottom of jacket have double rubber band for added comfort. Mesh inserts in hood and sleeves for added ventilation. Convenient plastic zipper closure.

Polyester 100%

Art.	3	4	5	6	7	8
MW	XS	S	M	L	XL	2XL



M0953 03 ☐ 05W



M0953 03 ☐ 03W



PROS

JUNIOR UNISEX TRACK PANTS.

Unisex model is suitable for both boys and girls. Elastic waist with drawstring provides a comfortable and reliable fit. Width of pant bottoms can be adjusted. Pockets on the front part.

Polyester 100%

Art.	3	4	5	6	7	8
MW	XS	S	M	L	XL	2XL



M0954 04 ☐ 05W



M0954 04 ☐ 01W



MAD WAVE

JUNIOR UNISEX TRACK JACKET.

Unisex model is suitable for both boys and girls. Dual rubber band sleeves and bottom of jacket have double rubber band for added comfort.
Polyester 100%

Art.	3	4	5	6	7	8
MW	XS	S	M	L	XL	2XL



M0953 04 □ 02W



M0953 04 □ 05W



M0953 04 □ 04W



M0953 04 □ 06W



M0953 04 □ 01W

MAD WAVE

JUNIOR UNISEX TRACK PANTS.

Unisex model is suitable for both boys and girls.
Elastic waist with drawstring provides a comfortable and reliable fit. Pockets on the front part.
Polyester 100% Polyester 100%

Art.	3	4	5	6	7	8
MW	XS	S	M	L	XL	2XL



M0954 05 □ 04W



M0954 05 □ 05W



M0954 05 □ 01W



PRO WOMEN

WOMEN T-SHIRT.

T-shirt with V-neck cut. Emphasizes silhouette while still allowing for freedom of movement. Natural material, keeps shape, comfortable to wear, allows air-flow.
Cotton100%

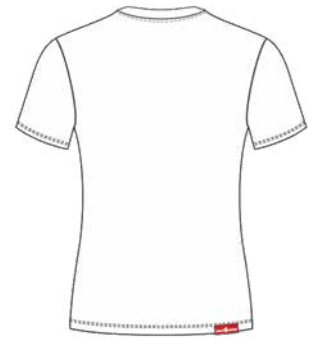
Art.	3	4	5	6	7	8	9
MW	XS	S	M	L	XL	2XL	3XL



M1026 02 01W



M1026 02 02W



M1026 02 05W



M1026 02 04W

PRO MEN

MEN T-SHIRT.

T-shirt with V-neck cut. Emphasizes silhouette while still allowing for freedom of movement. Natural material, keeps shape, comfortable to wear, allows air-flow.
Cotton100%

Art.	3	4	5	6	7	8	9
MW	XS	S	M	L	XL	2XL	3XL



M1026 01 01W



M1026 01 02W



M1026 01 05W



M1026 01 04W

PRO JUNIOR

JUNIOR T-SHIRT.

T-shirt with V-neck cut. Emphasizes silhouette while still allowing for freedom of movement. Natural material, keeps shape, comfortable to wear, allows air-flow.
Cotton100%

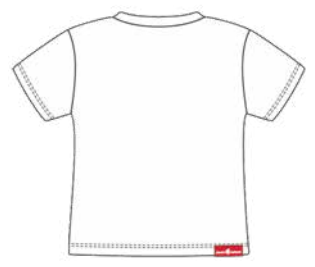
Art.	3	4	5	6	7	8	9
MW	XS	S	M	L	XL	2XL	3XL



M1026 03 01W



M1026 03 01W



M1026 03 05W



M1026 03 04W

SOLIDS WOMEN

WOMEN POLO.

Polo shirt is combination of classic and athletic styles.
Universal combination of comfort and elegance.
Emphasizes silhouette while still allowing for freedom of movement. Natural material, keeps shape, comfortable to wear, allows air-flow.
Cotton100%

Art.	3	4	5	6	7	8	9
MW	XS	S	M	L	XL	2XL	3XL



M1023 04 01W



M1023 04 02W



M1023 04 05W



M1023 04 04W

SOLIDS MEN

MEN POLO.

Polo shirt is combination of classic and athletic styles.
Universal combination of comfort and elegance.
Emphasizes silhouette while still allowing for freedom of movement. Natural material, keeps shape, comfortable to wear, allows air-flow.
Cotton100%

Art.	3	4	5	6	7	8	9
MW	XS	S	M	L	XL	2XL	3XL



M1023 02 01W



M1023 02 02W



M1023 02 05W



M1023 02 04W

SOLIDS

MEN SWIMSHORTS.

Great for relaxing on the beach. Do not affect figure.
Rib-Stop fabric is strong and long-lasting, fast dry. Doesn't shrink when washing, doesn't need ironing.
Mesh lining inside shorts provides a reliable fit, ventilation and comfort.
Polyester 100%. Lining – Polyester 100%

Art.	3	4	5	6	7	8	9	0
MW	XS	S	M	L	XL	2XL	3XL	4XL



M0231 06 □ 03W



M0231 06 □ 17W



M0231 06 □ 05W



M0231 06 □ 01W



SOLIDS

MEN SWIMSHORTS.

Men swimshorts with elastic waistband. Drawcord inside.
Front and back pockets on shorts. Lining-trunks are from mesh fabric. Rib-stop fabric lets shorts to dry quick.
Polyester 100%

Art.	3	4	5	6	7	8	9	0
MW	XS	S	M	L	XL	2XL	3XL	4XL



M1040 06 □ P1W



BOSTON

MEN SWIMSHORTS.

Men swimshorts with elastic waistband. Drawcord inside.
Front and back pockets on shorts. Lining-trunks are from mesh fabric. Rib-stop fabric lets shorts to dry quick.
Polyester 100%



M1040 07 □ B1W



M1040 05 □ P3W



Art.	3	4	5	6	7	8	9	0
MW	XS	S	M	L	XL	2XL	3XL	4XL

SOLIDS JUNIOR

JUNIOR SWIMSHORTS.

Junior swimshorts with elastic waistband. Great for relaxing on the beach. Rib-Stop fabric is strong and long-lasting, fast dry. Doesn't shrink when washing, doesn't need ironing. Mesh lining inside shorts provides a reliable fit, ventilation and comfort.

Polyester 100%. Lining – Polyester 100%

Art.	3	4	5	6	7	8
MW	XS	S	M	L	XL	2XL



M0240 51 03W



M0240 51 17W



M0240 51 05W



M0240 51 01W



BOSTON

JUNIOR SWIMSHORTS.

Junior swimshorts with elastic waistband. Drawcord inside.

Liningtrunks are from mesh fabric.

Polyester100%

Art.	5	6	7	8
MW	M	L	XL	2XL



M1040 02 P3W



NEPTUNE

JUNIOR SWIMSHORTS.

Junior swimshorts with elastic waistband. Drawcord inside.

Liningtrunks are from mesh fabric. Rib-stop fabric lets shorts to dry quick.

Polyester100%

Art.	5	6	7	8
MW	M	L	XL	2XL



M1040 08 C1W



NEPTUNE

JUNIOR SWIMSHORTS.

Junior swimshorts with elastic waistband. Drawcord inside.
Liningtrunks are from mesh fabric. Rib-stop fabric lets
shorts to dry quick.
Polyester100%

Art.	5	6	7	8
MW	M	L	XL	2XL



M1040 03 ☐ Z1W

SCALE

KIDS SWIMSHORTS.

Kids swimshorts with elastic waistband. Drawcord inside.
Liningtrunks are from mesh fabric. Rib-stop fabric lets
shorts to dry quick.
Polyester100%

Art.	2	3	4
MW	XXS	XS	S



M1040 04 ☐ Z2W

INTERNATIONAL SALES:

EUROPE:

BELARUS

ООО «Руэллия». Minsk.
tel. +3 7529 6062570

CZECH REPUBLIC, SLOVAKIA

PERNA IMPEX s.r.o.
Nový Jicin. 741 01.
Pod Skalkou 2145/25
www.madwave.cz
www.pernaimpex.cz
tel. 00420 603 580 742

DENMARK

Bokær Holding Aps
tel. +0045 28459738

FINLAND - ESTONIA

T:mi Swimpak.
Lepotie 2, Villähde, 15540,
Finland
tel. +358 44 529 5591

GREECE

RONA SA
6th klm Oreokastro
—Thessaloniki,
Thessaloniki 56429
tel. 2310682857
fax. 2310682165

SLOVENIA, CROATIA, MONTENEGRO, SERBIA, BOSNIA AND HERZEGOVINA

DIMSPORT d.o.o.
Puhova 10, 1000 Ljubljana, Slovenia
tel. +386 31 409380
tel. +386 40 311314
www.madwave.si
www.dimsport.si

RUSSIA AND FORMER SOVIET UNION REPUBLICS

Trade Aqua Sport
tel. +7 812 611 0030
www.madwave.ru

UK

ProSwimwear Ltd
Unit 1, Plum Lane, Dunwear,
Bridgwater, Somerset TA6 5HL
tel. +44 1278 550 640

NORWAY, SWEDEN

Fastswim AS
Slettavegen 1, N-2067 Jessheim,
Norway
tel. +47 90540789

POLAND

Representative Mad Wave
e-mail: info@sportcompany.pl
tel./fax +48 52 349 54 56
www.madwave.pl

PORTUGAL

ASMF Trading, Lda
Address: Rua de Paredes 164,
4100-374 Porto, Portugal
tel. +351939055449

ROMANIA

Aquatics Spa World S.R.L.
Independentei street 21C,
430069 Baia Mare,
Maramures, Romania
tel. + 40 262 213 660
fax. + 40 262 213 066
mob. + 40 725 605 605
www.madwave.ro

MOLDOVA

Corkcenter srl
str. Cetatea Alba 16/A,
office 207
tel. +373 788 62 978
tel. +373 695 58 598

LATVIA

Sia Magus Pro, Ltd
Celinieku street 12-8,
Riga, LV-1005,
tel. +371 26065979

ASIAN-PACIFIC REGION:

MALAYSIA and BRUNEI

ARB Worldwide Corporation SDN BHD
tel. +60333448390
fax. +60333448340

INDONESIA

Gria Sports
Jalan. Tentara Pelajar No.70,
Tasikmalaya — Jawa Barat.
Indonesia
tel. +8567037591

SINGAPORE

Mad Wave Singapore
YOUR SPORTS SPECIALIST
North Point Biz Hub . 2,
Yishun Industrial Street 1, #07-32
Singapore 768159
tel. +65 6259 0093
tel. +65 9181 5127

SOUTH KOREA

Danwoo SFG. B2008, Woolim Lions
Valley 5th, 302 Galmachi-Ro,
Jungwon-Gu,
Seongnam-Si, Gyeonggi-Do,
13201 Korea
tel. 821037309300

PHILLIPPINES

Mad Wave Philippines.
Bubblewalk Adventure
53 BELEN RD PAMPANGA LANANG.
DAVAO CITY
tel. +639209135587
tel. +063822860700

CHINA, TAIWAN

MERLION SPORTS LTD.
14F., No. 99, Guangfu N. Rd.
Songsan Dist.,
Taipei City 10560
Taiwan, R.O.C.
tel. +886-981208178

SRI LANKA

Glory Swim Shop
No : 01, Spathodia Avenue
Thimbirigasyaya Road.
Colombo 05
tel. +94 777 30 77 88
tel. +94 112 55 3 555
www.gloryswimshop.com

MONGOLIA

JMN Co.,Ltd. Mongolia,
Ulaanbaatar city,
Bayanzurkh district
976-94112008

MIDDLE EAST REGION:

ISRAEL

Dugit Yeheskel Sasson Ltd
ben yehuda 250 Tel Aviv
tel. +972546609235
www.dugit.co.il

TURKEY

Pencere Yapi Malz.Ins.
Teks.ve Elk.San.Tic.Ltd.Sti.
Bagdat Cad, No:510
Bostanci / Kadikoy
Istanbul - Turkiye
hakan@kaanyuzme.com
tel. +905322452552

AFRICA:

EGYPT

ESports Co. Egypt.
21 Obour Buildings
— Salah Salem Nasr City
— Cairo — Egypt
tel. +202 24044061

REPUBLIC OF SOUTH AFRICA

Aqua Adrenaline
195 Victoria Street Newcastle 2940
0716125445

EUROPE AND WORLD WIDE:

Mad Wave Europe OY
Lepotie 2, 15540, Villähde, Finland
info@madwave.eu
www.madwave.eu

**MAD
WAVE**

MADWAVE.EU